

---

**PALMERSTON NORTH CITY COUNCIL**

---

**MINUTES ATTACHMENTS**  
**INFRASTRUCTURE COMMITTEE**

---

**9AM, WEDNESDAY 2 DECEMBER 2020**  
COUNCIL CHAMBER, FIRST FLOOR, CIVIC ADMINISTRATION BUILDING  
32 THE SQUARE, PALMERSTON NORTH

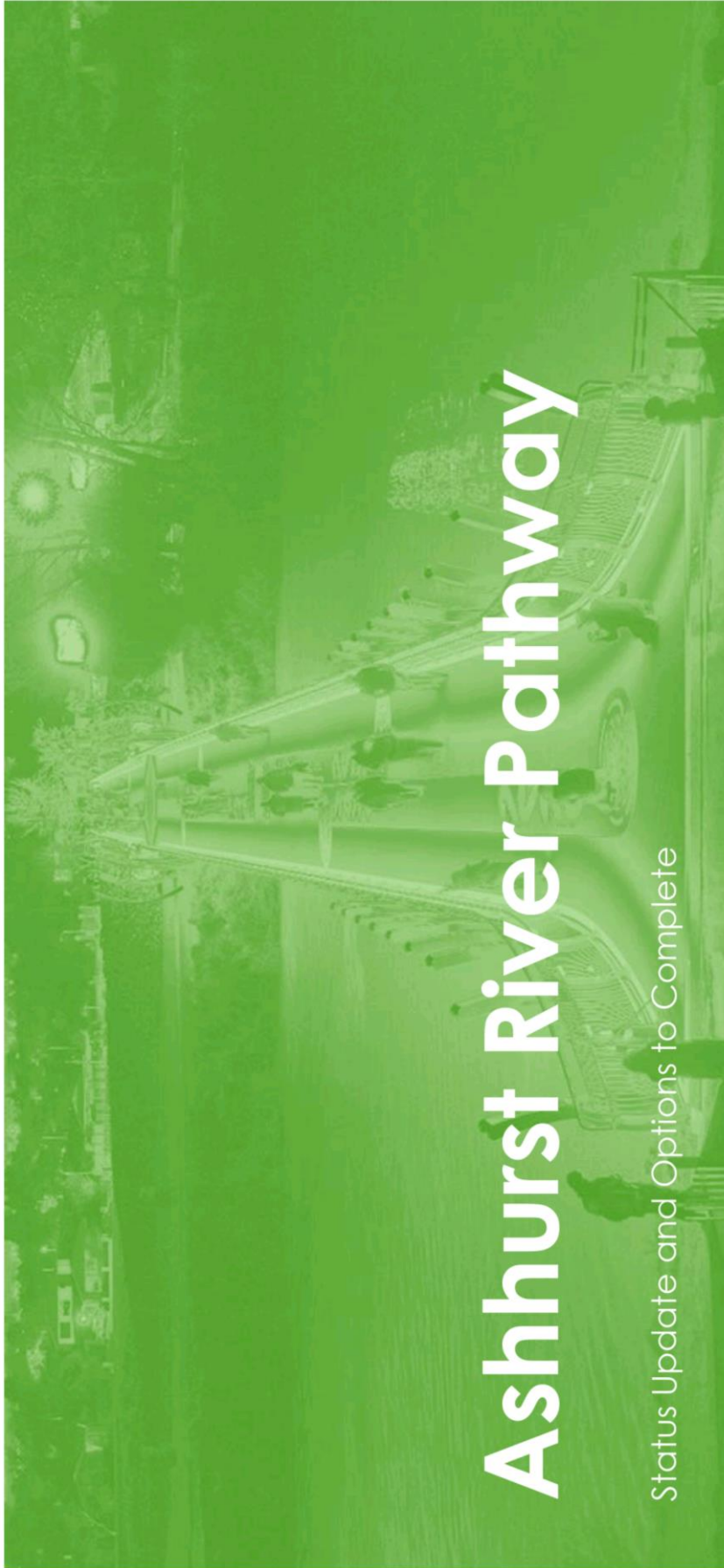
---



## **INFRASTRUCTURE COMMITTEE MEETING**

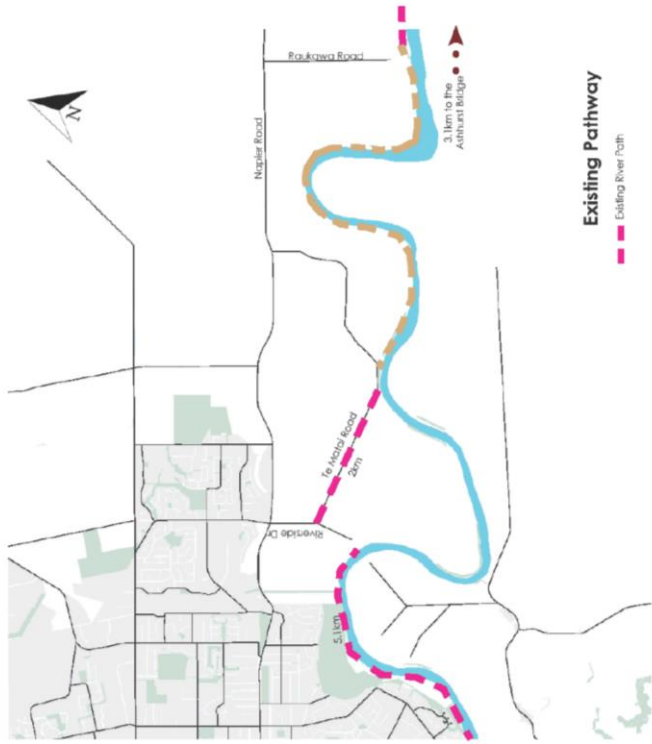
2 December 2020

- 6 Options to Complete - Manawatu River Pathway - Ashhurst to Palmerston North**
1. Presentation - Ashhurst River Pathway 4



## Status of Riverside Pathways

- More than 10km of riverside pathway completed on city side of the river
- More than 9km of pathway completed on the Massey side of the river
- New Te Ara Kotahi pedestrian and cycling bridge constructed linking the two networks
- Development of area at the Mangaone confluence linking Manawatu Riverside pathway to Mangaone Pathway
- Three outstanding sections of the Manawatu river pathway to give effect to a full riverside pathway linking Ashhurst and the southern end of the city



**PALMY**  
MANAONE

**PALMY**  
PALMERSTON NORTH CITY COUNCIL



**Existing Pathway**  
Existing connect land



## Where to from here?

- Option 1. Continue to negotiate and engage with no certainty of delivery
- Option 2. Abandon the Riverside Pathway and Bridge the gap with an On-road path
- Option 3. Explore options under law to secure the preferred riverside pathway alignment



