



PAPAIOEA
PALMERSTON
NORTH
CITY

PALMERSTON NORTH CITY COUNCIL

AGENDA
MINUTES ATTACHMENTS
COMMUNITY COMMITTEE

9AM, WEDNESDAY 9 AUGUST 2023

COUNCIL CHAMBER, FIRST FLOOR
CIVIC ADMINISTRATION BUILDING
32 THE SQUARE, PALMERSTON NORTH

COMMUNITY COMMITTEE MEETING

9 August 2023

6 Hearing of Submissions: Draft Gambling Venue Policies 2023

1.	Submitter # 8 - Gaming Machine Association of NZ - Jarrod True	4
2.	Submitter # 36 - Te Whatu Ora	18
3.	Submitter # 39 - Amputee Society of Manawatū & Districts Inc	26
4.	Submitter # 40 - Don Martin, NZ Community Trust	31
5.	Submitter # 44 - The Lion Foundation Presentation	41
6.	Submitter # 45 - Kirsty Kang, Problem Gambling Foundation	51

Gambling Venue Policy Review

- **Jarrold True – Gaming Machine Association of New Zealand.**
- **The Gaming Machine Association of New Zealand represents the vast majority of New Zealand’s gaming societies.**

Introduction

- **The Association asks that Council:**
 - Retain the current ability for venues to relocate following a natural disaster or fire.
 - Broaden the relocation provision to enable venues to move in any circumstances when they are moving to a location with a lower deprivation rating and/or out of areas close to suburban/residential areas.
 - Broaden the relocation provision to enable venues to move to new, modern premises, and to move to buildings that have a higher earthquake rating.
 - Retain the current cap of 347 gaming machines.

Gaming Machine Relocation

- **The current policy allows venues to relocate following a natural disaster or fire.**
- **This is fair and reasonable. There is no new evidence or new concern that would justify a policy change.**
- **Removing the provision could result in a loss of \$5.8m of community funding overnight, in the event of a natural disaster.**

Expanding Relocation

- **The venue relocation provision should be expanded.**
- **Venue relocation is a harm minimisation tool.**
- **Venue relocation allows venues to move out of undesirable areas such as high deprivation areas and areas close to suburban/residential areas.**
- **Not allowing relocation entrenches venues in undesirable areas.**

Relocation Purpose

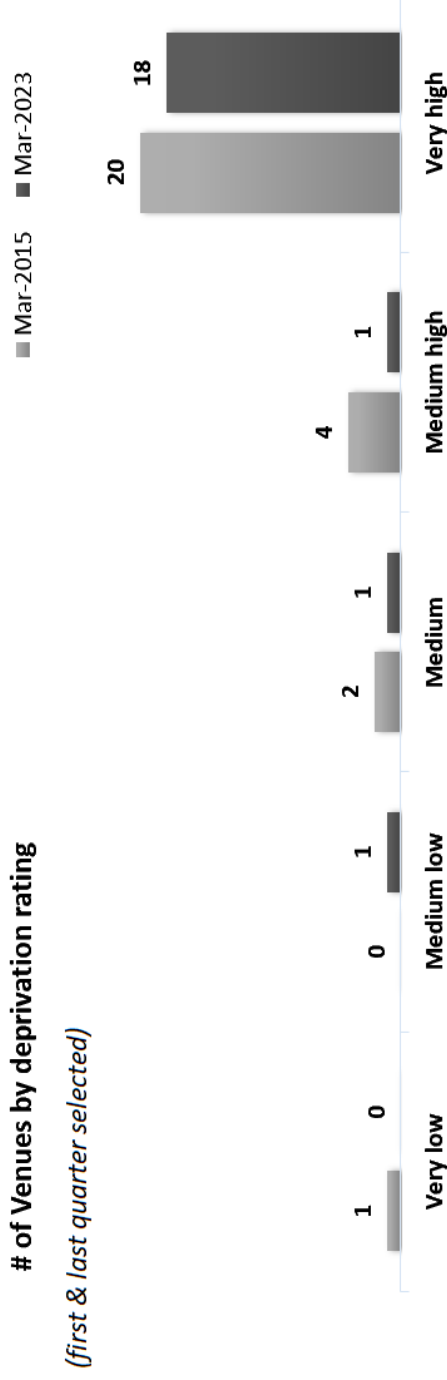
- **The Gambling Act was amended in 2013 to enable relocations as a result of a Māori Party Bill.**
- **The purpose of the amendment was to move venues out of harm's way to more appropriate areas such as central business districts.**
- **Parliament wanted gaming venues to move out of undesirable locations regardless of the reason for the move.**

Why Wait for a Natural Disaster?

- **A gaming venue should be able to relocate to an area that is more desirable from a harm minimisation perspective, anytime.**
- **We should not have to wait for a fire or earthquake to move gaming machines out of undesirable areas, such as high deprivation areas or areas close to suburban/residential areas.**

Current Venue Location

- 18 of the 21 venues are in very high deprivation areas.



- Half of all the venues are located in the suburbs or villages.

Gaming Machine Relocation

- **It is also fair and reasonable to allow venues to move:**
 - **Out of earthquake prone buildings.**
 - **To free up large blocks of land.**
 - **When the landlord is demanding unreasonable rentals.**
 - **To new, modern, refurbished premises.**

Business Redevelopment Positive

- It is positive to have vibrant town centres with modern, refurbished businesses.



The old Te Rapa Tavern



The new Te Rapa Tavern

- Redevelopment improves the local economy and creates employment.
- Redevelopment encourages tourism.

