



PALMERSTON NORTH CITY COUNCIL

AGENDA MINUTES ATTACHMENTS SUSTAINABILITY COMMITTEE

9:00 AM, WEDNESDAY 22 MAY 2024

COUNCIL CHAMBER, FIRST FLOOR
CIVIC ADMINISTRATION BUILDING
32 THE SQUARE, PALMERSTON NORTH

SUSTAINABILITY COMMITTEE MEETING

22 May 2024

6	Presentation - Ruahine Kiwi Project	
1.	Presentation - Ruahine Kiwi	4
2.	Ruahine Kiwi Strategic Framework 2024	16



Ruahine
Kiwi



DAILY
MY[®]

A COMMUNITY BASED PROJECT

Environment Network Manawatū

Manawatū River
Source to Sea

Te Kāuru Eastern
Manawatū River
Hapū Collective



PROJECT GOALS



- Kiwi back in our region
- We have ideal habitat at the interface between bush and farmland.
- Translocation could start as early as 2026.
- To qualify we need to keep up our good work.



SUCCESSFUL KIWI PROJECTS



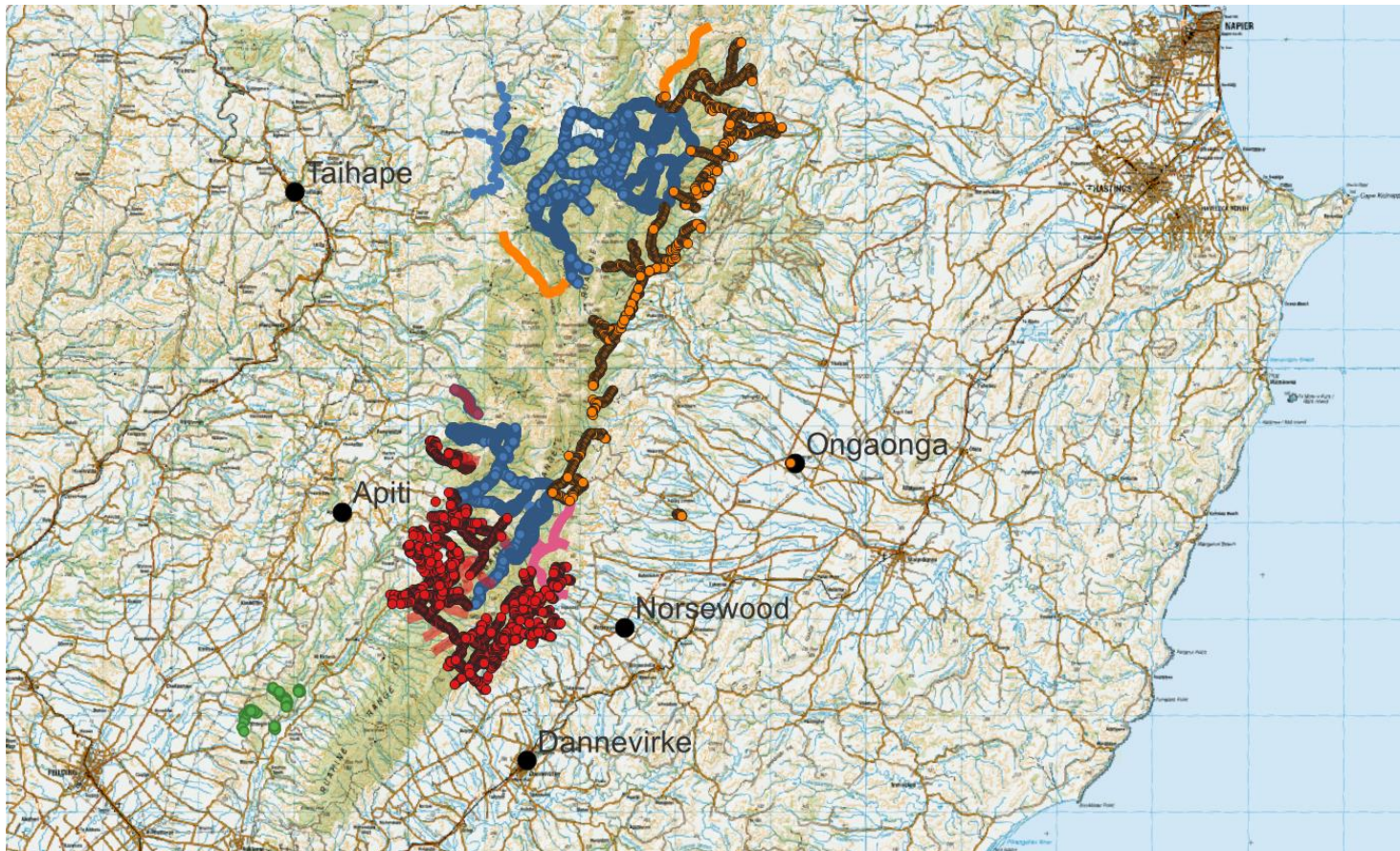
- Capital Kiwi
- Northern Ruahine
- Tongariro



WHAT WE HAVE ACHIEVED SO FAR

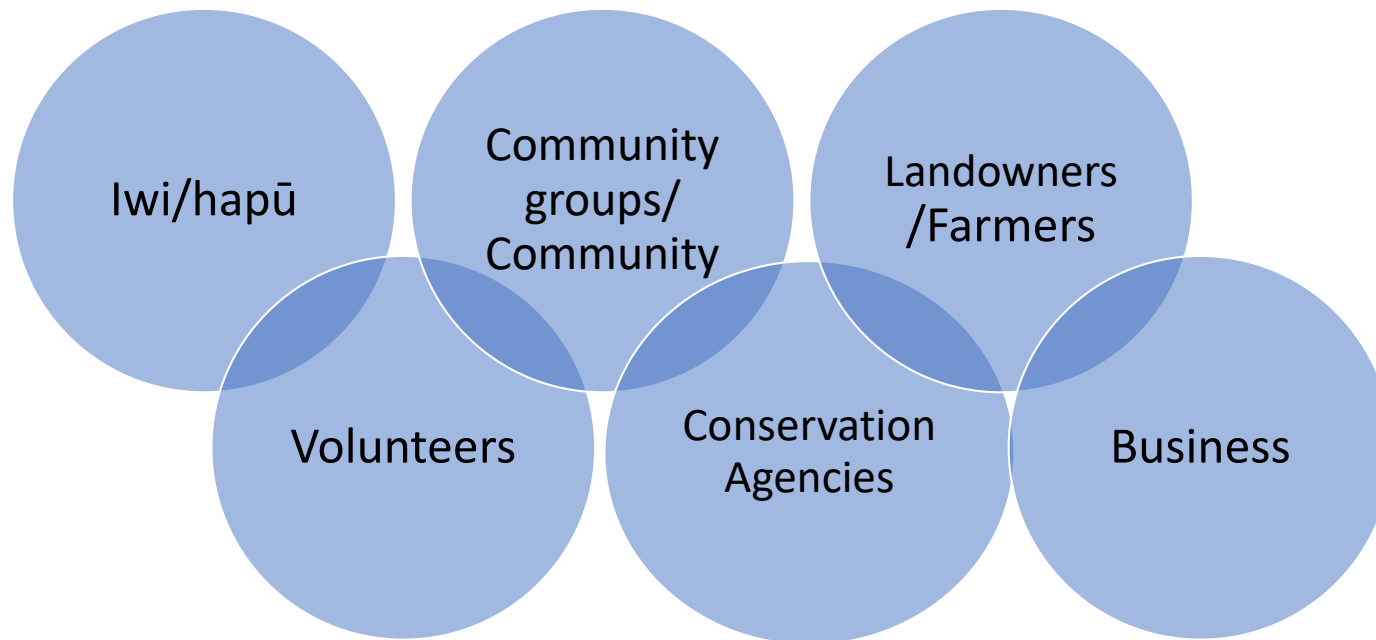


RUAHINE PROJECT AREAS



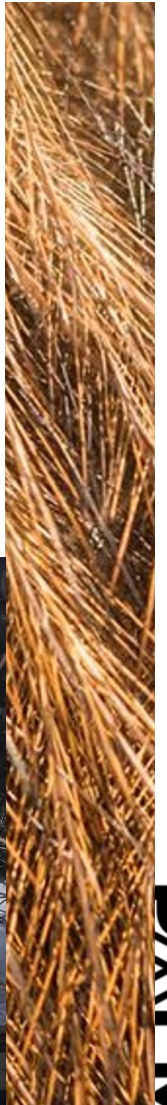
- **RED** - RUAHINE
KIWI
- **BLUE** - RUAHINE
WHIO
- **ORANGE** - JFN
MAURI OHO
- **PINK** - MANAAKI
RUAHINE
- **GREEN** - RECAP

WHO IS INVOLVED



IMMEDIATE CHALLENGE: KEEPING RUAHINE KIWI GOING

1. Volunteers to continue trapping
2. Employing a trapping coordinator to oversee volunteers and organise logistics



To do this Ruahine Kiwi needs each year:

Project Lead (1 FTE)	80,000
Co-Ordinator (0.5 FTE)	35,000
Transport	30,000
Bait	7,850
Tracking tunnels	500
Admin	15,000
TOTAL	168,350
Volunteer Time Value	80,000



Long-term Goal - A LANDSCAPE PROJECT

- Focus on habitat regeneration not just mustelid control.
- Link together existing pest control initiatives and work to fill gaps.
- Provide diversity of employment (eg trapping and planting), facilitate subcontract work opportunities, open up additional revenue streams (eg possum trapping), operationalise science, promote community action, foster educational projects etc.



Grow Ruahine Kiwi's capacity for strategic leadership to:

- Increase community, business, and council awareness and support
- Identify potential risks and barriers to success and find solutions
- Maintain a capable, reliable team and sustainable project



Questions?



A community led landscape scale predator control project with the aim of returning North Island eastern brown kiwi to the southern Ruahine by 2026.

Ruahine Kiwi

Find out more



www.enm.org.nz

Dalmy

RUAHINE KIWI STRATEGIC FRAMEWORK 2024

Our Purpose

To acknowledge our responsibility to whakapapa to work together to achieve kaitakitanga/stewardship for the Ruahine and surrounds

Our Vision

Te taiao/the environment and mana whenua/peoples of the land are thriving

Our Key Focus Areas

Kiwi thriving
in the
Ruahine Range

Leadership &
Support

Increase public
awareness and
involvement

Mahi tahi,
working
together

Critical Enabler

Secure, long-term funding

Our Goals

Pre-kiwi release (2026)

1. Multiple secure locations for kiwi release on both the eastern and western sides of the range
2. We have high level mana whenua support for release
3. Kiwi release in 2026
4. We have successfully met our JFN contractual obligations

1. An efficient and effective project leadership structure
2. Mutually beneficial relationships with mana whenua led biodiversity projects
3. Develop a succession plan to ensure long-term project success

1. Increased public awareness of the project
2. Increased skilled volunteer involvement

1. Strong relationships and trust between Ruahine kiwi partners
2. Increased capability of staff and volunteers
3. Collaborative advocacy to support Ruahine regeneration

Post-kiwi release

5. Ongoing monitoring and suppression of predators
6. Expand efforts to enhance biodiversity in the Ruahine Range

4. Review and refine leadership structure and succession plan

3. Expanded and ongoing public engagement and support for the project

4. Investigate options for a formal partnership arrangement between all Ruahine projects to achieve landscape-scale restoration



Ruahine
Kiwi



For more information visit www.enm.org.nz