



**PAPAIOEA
PALMERSTON
NORTH
CITY**

PALMERSTON NORTH CITY COUNCIL

AGENDA
MINUTES ATTACHMENTS
**STRATEGY & FINANCE
COMMITTEE**

9:00 AM, WEDNESDAY 26 FEBRUARY 2025

COUNCIL CHAMBER, FIRST FLOOR
CIVIC ADMINISTRATION BUILDING
32 THE SQUARE, PALMERSTON NORTH

STRATEGY & FINANCE COMMITTEE MEETING

26 February 2025

- | | | |
|----------|--|---|
| 7 | Draft Waste Management and Minimisation Bylaw - Hearing of Submissions | |
| | 1. Submission - Draft Waste Management & Minimisation Bylaw - Chris Teo-Sherrell | 4 |
| 8 | Presentation - Kia Toa Rugby Football Club Incorporated | |
| | 1. Presentation - Kia Toa Rugby Football Club Incorporated | 5 |

'For the avoidance of doubt, no person is required by this ~~clause~~ part to submit a construction and , alteration, deconstruction, demolition or removal waste management and minimisation plan until the Council ~~has made a resolution under clause 13.1.~~ has specified, under clause 13.4, the information required to be recorded in the Administration Manual.'



Kia Toa Clubrooms

Bill Brown Park

Request for Lease of Council Land

Kia Toa RFC Inc.
twofourtwo^{AM}

Kia Toa Rugby Football Club

- **Formed in 1902**
- **Current Team Numbers are :**
 - 5 in Senior Rugby
 - 17 in Junior Rugby
 - 9 in Senior Netball
- **Strong Supporter Membership**
- **Prominent ethnic groups of Pakeha, Māori & Pasifika**

Kia Toa RFC Inc.
twofourtwo^{AM}

Numerous Clubroom Venues

- Regularly moving for various reasons
 - The latest being the Cloverlea Tavern fire situation
- Desire for 'Home Ground' Bill Brown Park Clubrooms

Kia Toa RFC Inc.
twofourtwo^{AM}

Land Lease Footprint



Kia Toa RFC Inc.
twofourtwo^{AM}

Kia Toa Clubrooms

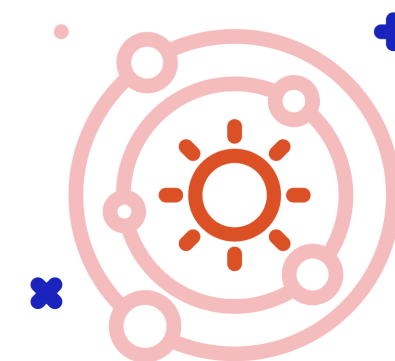
Bill Brown Park

Concept Design

Kia Toa RFC Inc.
twofourtwo^{AM}

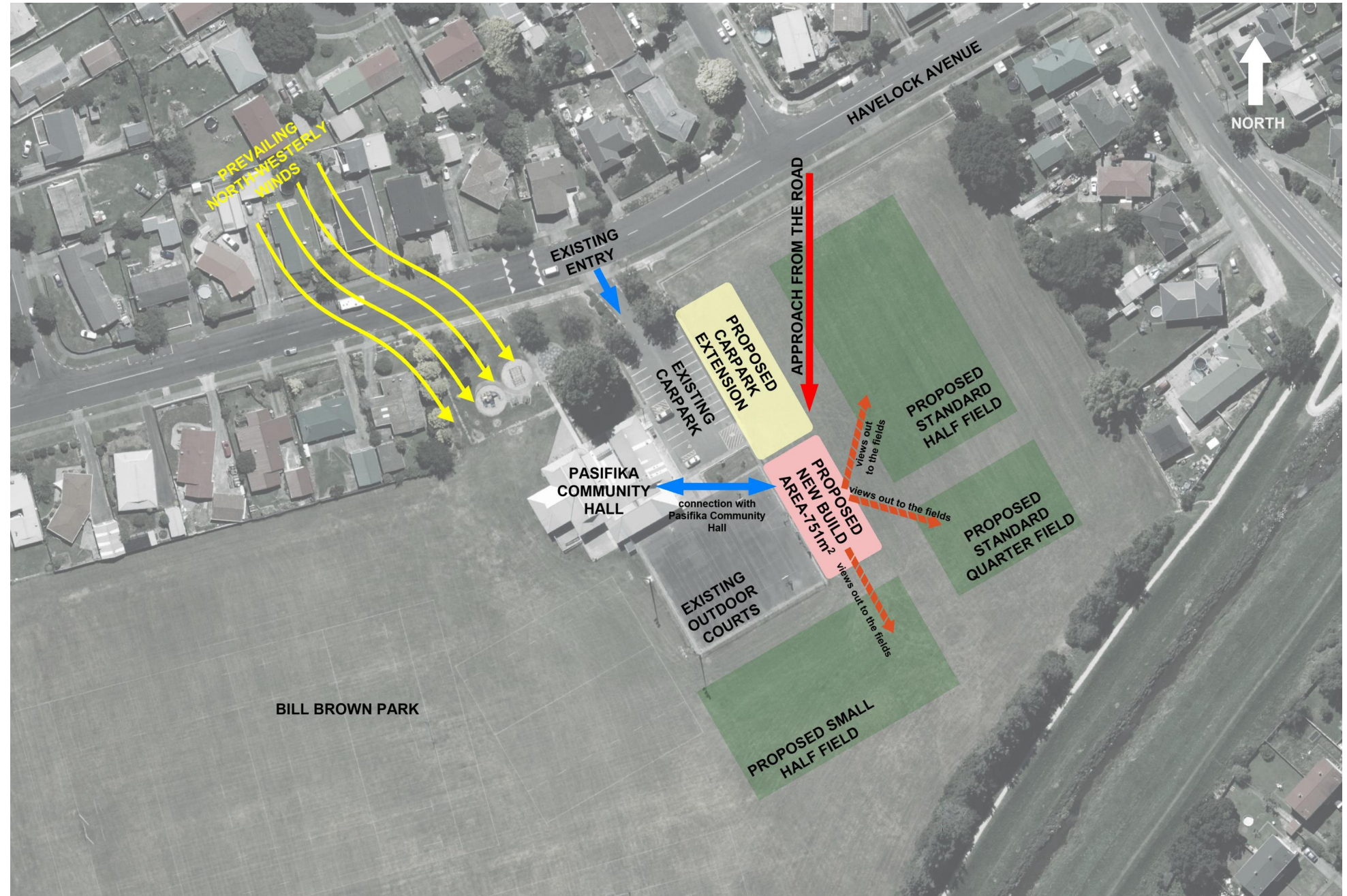
design drivers

- **A place to uphold the Kia Toa Values.
Manaakitanga, Whanaungatanga, Kotahitanga, Whakapapa**
- **Inclusivity, a Multi-Cultural Space**
- **Connection + Outlook from spaces**
- **Multi-Use**
- **Memorabilia**
- **Budget**



twofourtwo^{AM}

site context



cultural assimilation

“Ka mua, ka muri” – walking backwards into the future

This whakataukī or ‘proverb’ speaks to Māori perspectives of time, where the past, the present and the future are viewed as intertwined, and life as a continuous cosmic process.

Kia Toa Values

Manaakitanga

1. (noun) **hospitality**, kindness, generosity, **support** - the process of showing respect, generosity and care for others.

Whanaungatanga

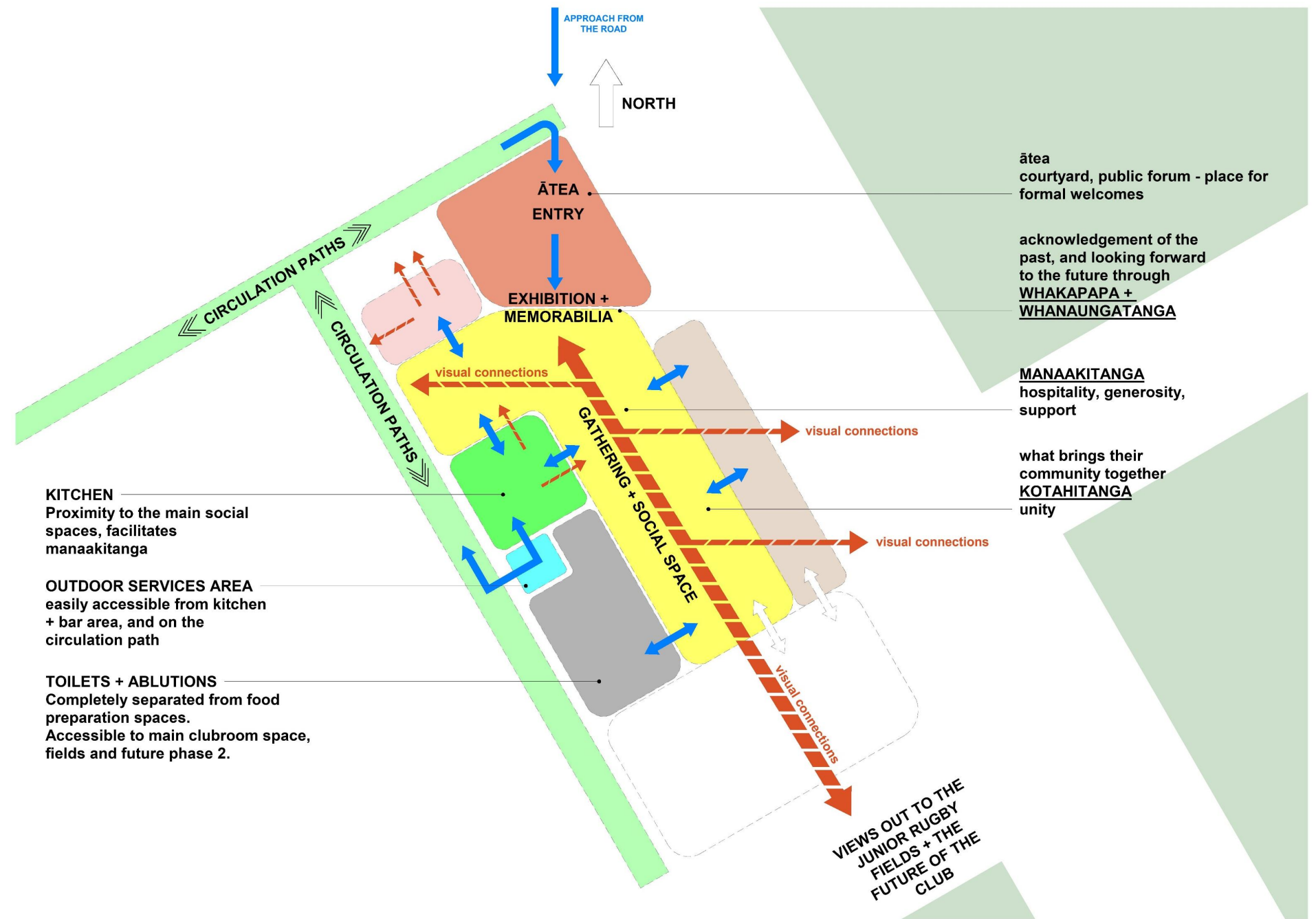
1. (noun) relationship, **kinship**, sense of family **connection** - a relationship through shared experiences and working together which provides people with a **sense of belonging**. It develops as a result of kinship rights and obligations, which also serve to strengthen each member of the kin group. It also extends to others to whom one develops a close familial, friendship or reciprocal relationship.

Kotahitanga

1. (noun) **unity**, togetherness, solidarity, collective action.

Whakapapa

4. (noun) genealogy, genealogical table, lineage, **descent**

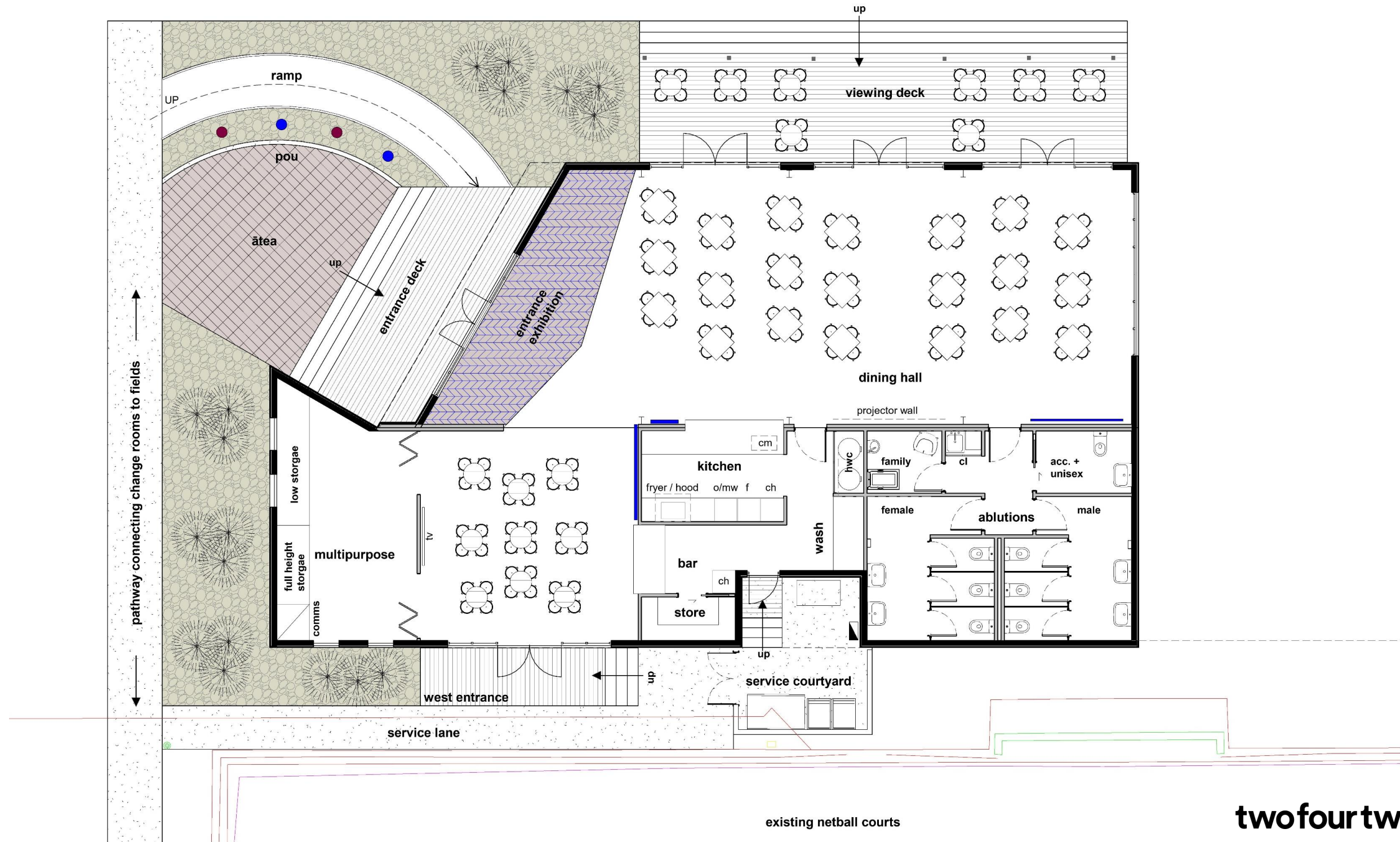


concept



twofourtwo^{AM}

concept



twofourtwo^{AM}

twofourtwo^{AM}



