



**PAPAIOEA**  
**PALMERSTON**  
**NORTH**  
**CITY**

---

# **PALMERSTON NORTH CITY COUNCIL**

---

AGENDA  
MINUTES ATTACHMENTS  
**CULTURE & SPORT**  
**COMMITTEE**

---

1:00 PM, WEDNESDAY 7 FEBRUARY 2024

COUNCIL CHAMBER, FIRST FLOOR  
CIVIC ADMINISTRATION BUILDING  
32 THE SQUARE, PALMERSTON NORTH

---



## **CULTURE & SPORT COMMITTEE MEETING**

7 February 2024

- |          |   |    |
|----------|---|----|
| <b>7</b> | <b>Presentation - Manawatū Youth Theatre</b>                      |    |
|          | 1. Presentation - Manawatū Youth Theatre                          | 4  |
| <b>8</b> | <b>Te Manawa Museums Trust: Draft Statement of Intent 2024-27</b> |    |
|          | 1. Presentation - Te Manawa Museums Trust                         | 17 |



MYTH

Manawatu Youth Theatre  
Te Whare Tapere Rangatahi O Manawatū

DALMY®

Since  
2018

**DALMY**<sup>®</sup>

# What we are about

Free access to high quality performance opportunities

Building bridges with other community performance groups

Low cost to attend our shows

Working with local Iwi, Pasifica and other ethnicities

**Safe, inclusive, accessible**

**FUN!!!**









# 2023 in numbers

2 productions

248 youth auditioned

6800 audience members

90 crew

83 cast

over 600 rehearsal hours

26 theatre award nominations



DALMY®

Whats next

Upcoming shows 2025/26

SHREK Jr

LION KING Jr (Regent on Broadway)

Possibly - SCHOOL OF ROCK!!

## How has council supported

First few shows, financial support in running the productions

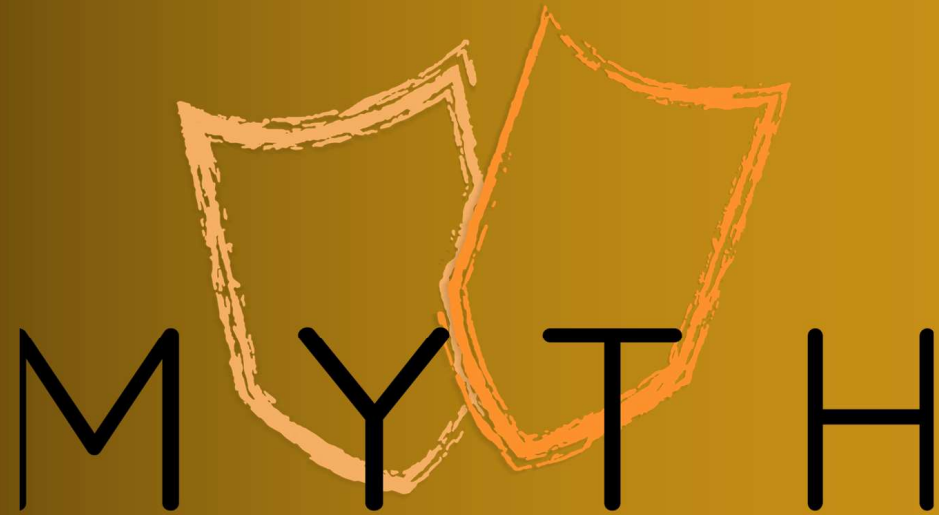
Moana - Assisting with large scale production costs such as Regent on Broadway, Technical Hire and Operation

Frozen - Design workshops/build and puppeteering

# In Development

Kane Parsons and Graham Johnston developing new works with stories focused on young people, giving an authentic youth voice to musical theatre in Aotearoa

Ngā mihi nui



Manawatu Youth Theatre  
Te Whare Tapere Rangatahi O Manawatū

**DALMY**<sup>®</sup>



# TE MANAWA MUSEUM

PRESENTATION TO COUNCIL | HUITANGURU FEB 2024



**PALMY**<sup>®</sup>



Physical visits  
 84,401  
 65%



External Revenue  
 290,037  
 57%



Visitor Satisfaction  
 98%

# WHAKAAHU WHAKAMUA

BASELINE PROGRESS  
 AT 6 MONTHS





## 23,697 VISITS IN ITS FIRST 6 WEEKS

“Six Extinctions” has opened the door for deeper conversations about our place in the world and our commitment to the environment.

It has also provided the opportunity to showcase items from our own collection including huia and moa remains.

Its themes have really resonated with our community.

  
te manawa  
TE PAPAIOEA PALMERSTON NORTH

MUSEUM +  
GALLERY  
PALMY®

PALMY®



Rita Angus

# DRAWCARDS DRAW CROWDS

Te Manawa launched a summer programme with more than 17 exhibitions, programmes and activities. It was a huge body of work that saw big results.

It's important to aspire to, and deliver, a level of quality, energy and innovation to maintain high visitor engagement, increase revenue and see an economic impact from our contribution to the city.





## THE COOLEST CLASSROOM IN TOWN

Last year Te Manawa began delivering its curriculum-led learning programmes for schools, free of charge and developed two new matauranga Māori programmes in collaboration with Rangitāne.

So far this year more than 1600 pupils have participated in learning programmes at Te Manawa.





## FUNDERS FINDERS

We're building a new funding strategy to continue growing our third-party revenue through grants and sponsorship.

So far this year we've received half of our funding targets and have secured further commitments to surpass this by end of FY.





# HE TANGATA HE TANGATA HE TANGATA

We've moved with PNCC to the 'Strategic Pay' remuneration system. We need to pay our staff fairly, and attract and retain the best talent to live and work in our city.

It's important to benchmark this against industry standards. This is a specialised and competitive sector.





## LONG-TERM HAS BEEN TOO LONG

Our semi-permanent exhibitions have not had adequate investment since their installation more than a decade ago. The longer they've been left, the more pressure they put on resources to upgrade.

If we don't rejuvenate them, we risk losing engagement, repeat visitation and third-party investment. We will fall behind our peers and our ability to collect and care for taonga will be compromised.







## WE'RE MAKING PLANS

With Rangitāne, we'll upgrade the Te Rangi Whenua gallery and integrate Te Ao Māori across the Museum.

We're developing a new Science Centre to replace the Te Awa gallery.

We're adding new lighting and new cases to reactivate spaces for displays.

We'll soon launch a roadmap with a proposed timeline of priorities.





## WE'RE SHOWING OUR AGE

Our facilities aren't fit for purpose but we're making the best of it.

We need to keep our ambitions high and not sit in a holding pattern while we wait for our challenges to be solved.

This means continuous maintenance and upgrade of an ageing facility while we plan for the future, with better safety, sustainability and cultural design in mind.



MUSEUM +  
GALLERY  
PALMY®

PALMY®



## INCREASE TO BASELINE

We're seeking an increase to our baseline grant to cover a reprioritised programme of development and improvements

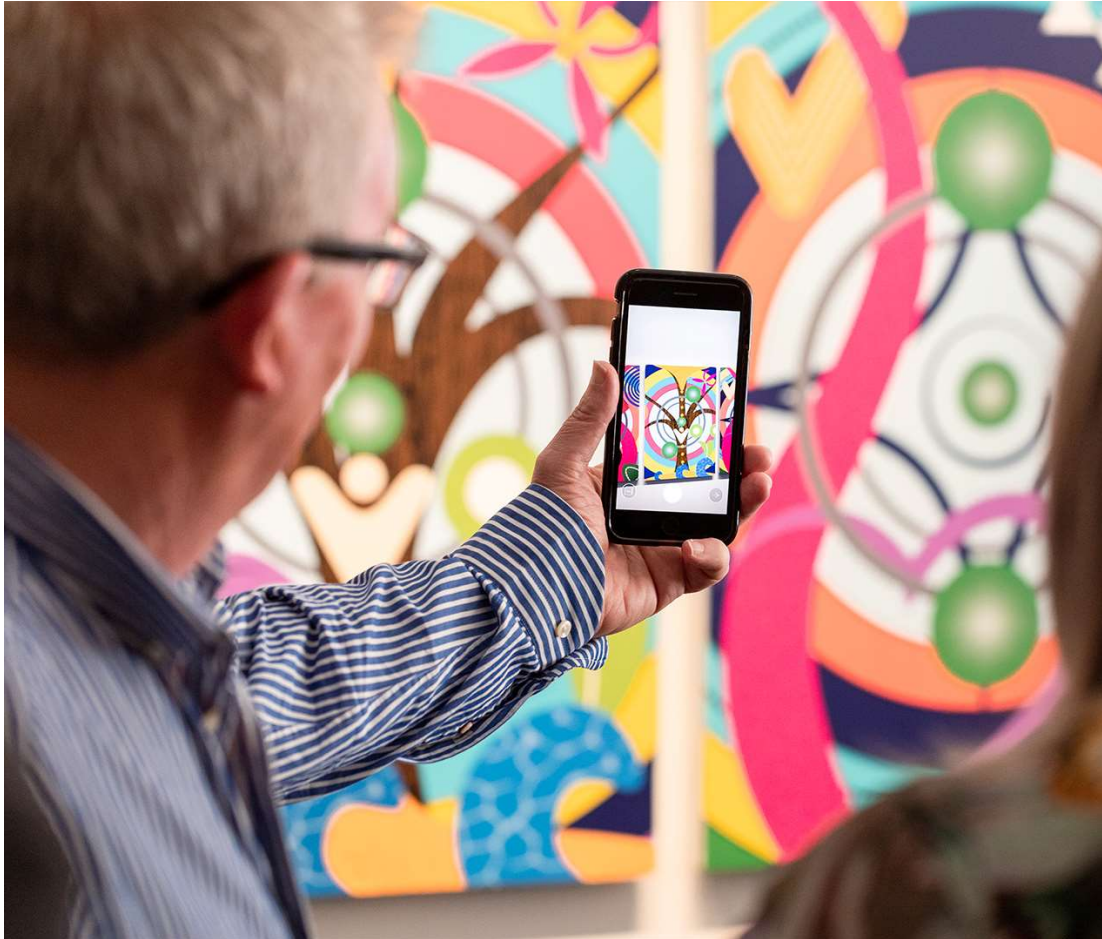
Y1: increase to base grant of \$151,700  
Y2: additional request of \$80,000 in stepped approach  
Y3: ongoing.

We want to plan and budget carefully, and with the security of our baseline grant underpinning our core activities.

  
te manawa  
TE PAPAIOEA PALMERSTON NORTH

MUSEUM +  
GALLERY  
PALMY®

PALMY®



## OUR ROADMAP

- New management team and structure.
- Competitive and fair remuneration for staff.
- Continue to increase our third-party revenue.
- Better integrate Te Ao Māori in all spaces.
- Build a new Science Centre to replace Te Awa.
- Redevelop Te Rangi Whenua with Rangitāne.
- Rejuvenate all neglected long-term spaces.
- Maintain and work with ageing facility.
- Work with Council on cultural precinct plans.
- Prioritise planning with careful budgeting.
- Be realistic and still ambitious.
- Improve our sustainability.
- Build on our stakeholder relationships.

  
te manawa  
TE PAPAIOEA PALMERSTON NORTH

MUSEUM +  
GALLERY  
PALMY<sup>®</sup>

PALMY<sup>®</sup>