



**PAPAIOEA**  
PALMERSTON  
NORTH  
CITY

---

# **PALMERSTON NORTH CITY COUNCIL**

---

AGENDA

**MINUTES ATTACHMENTS**  
**COUNCIL**

---

**9:00 AM, WEDNESDAY 27 MAY 2026**

COUNCIL CHAMBER, FIRST FLOOR  
CIVIC ADMINISTRATION BUILDING  
32 THE SQUARE, PALMERSTON NORTH

---



## **COUNCIL MEETING**

**27 May 2026**

- 7 Heritage New Zealand Pouhere Tāonga Proposal to List the Ladies' Rest**
1. Heritage New Zealand Pouhere Tāonga Proposal to List the Ladies' Rest 4
- 8 Manawatū Regional Freight Ring Road Indicative Business Case: Short List Programme - Options 2A and 2C**
1. Manawatū Regional Freight Ring Road Business Case 35



HERITAGE NEW ZEALAND  
POUHERE TAONGA

# Ladies' Rest

## The Square, PALMERSTON NORTH

List No. 9875 | Category 2 Historic Place

New Zealand Heritage List/ Rārangī Kōrero - Report for a Historic Place



*Ladies' Rest, Palmerston North. A. Renton-Green, Heritage New Zealand Pouhere Taonga, 25 September 2025.*

**Report Written by: Blyss Wagstaff & Jessica Delman**

Date: 26 May 2026

**EXECUTIVE SUMMARY ..... 1**

**1 IDENTIFICATION OF PLACE ..... 2**

    1.1 Name of Place ..... 2

    1.2 Location Information..... 2

    1.3 Map of Extent ..... 3

**2 SIGNIFICANCE ASSESSMENT ..... 6**

    2.1 Assessment of Criteria for Entrance on the List ..... 6

    2.2 Assessment of Criteria to Assign a Category on the List ..... 7

**3 SUPPORTING INFORMATION ..... 9**

    3.1 Historical Information: ..... 9

    3.2 Physical Information ..... 18

    3.3 Chattels ..... 27

**4 APPENDICES ..... 27**

    4.1 Appendix One: Construction and Use Information..... 27

    4.2 Appendix Two: Sources ..... 29

*Disclaimer*

*Please note that entry on the New Zealand Heritage List/Rārangī Kōrero identifies only the heritage values of the property concerned and should not be construed as advice on the state of the property, or as a comment of its soundness or safety, including in regard to earthquake risk, safety in the event of fire, or insanitary conditions.*

*Archaeological sites are protected by the Heritage New Zealand Pouhere Taonga Act 2014, regardless of whether they are entered on the New Zealand Heritage List/Rārangī Kōrero or not. Archaeological sites include ‘places associated with pre-1900 human activity, where there may be evidence relating to the history of New Zealand’. This List entry report should not be read as a statement on whether or not the archaeological provisions of the Act apply to the property (s) concerned. Please contact your local Heritage New Zealand office for archaeological advice.*

## EXECUTIVE SUMMARY

The purpose of this report is to provide evidence to support the inclusion of Ladies' Rest in the New Zealand Heritage List/Rārangī Kōrero as a historic place.

The Ladies' Rest is a tangible symbol of the hard-won right for women to have public toilets across New Zealand. More than simply a 'convenience', these facilities enabled women to actively participate in life outside the home. The well-executed Art Deco architecture transforms this Palmerston North building from a utilitarian facility into a structure of notable design merit, and the domestic touches in the design have created a much-loved, comfortable and safe space for generations of women and children. Since its completion in 1936, the Ladies' Rest has often been the topic of public interest and debate (notably the 2004 protests against its redevelopment), reflecting the political nature of public toilets and the continuing campaign for gender equality.

The 1866 Palmerston North town plan included a central reserve for communal use, known commonly as The Square but given the name 'Te Marae o Hine' (Courtyard of the Daughter of Peace) by mana whenua iwi in 1878. The civic heart of the city, Te Marae o Hine contains numerous monuments, gathering spaces and areas for recreation. Public toilets for men were added in 1898, but – as was common at the time – women were expected to use railway station or shop facilities. As a result, women did not often go out for long periods of time. Advocacy from groups like the New Zealand Women's Christian Temperance Movement succeeded in 1916–17 when the town council built and opened the first women's toilets in The Square. However, within a decade their condition and limited convenience saw many calls for improved facilities.

The City Engineer was eventually ordered to prepare plans for a new ladies' rest room adjoining The Square's bus shelter, and the six-month construction was completed by December 1936. Partially reusing the 1917 toilets as foundations, the new building contained toilets and changing rooms, a lounge area with armchairs, and was staffed by attendants who kept it scrupulously clean. A much-valued feature was the Mothers' Room for changing and feeding small children, who had their own smaller-sized toilet. The striking Art Deco architecture – symmetrical and streamlined with curved walls, geometrical plaster decoration, and no overhanging ornamentation – reflected the impact of the 1931 Hawke's Bay earthquake. The echoes of the Great Depression were also present in the reuse of fittings and fixtures from the 1917 toilets.

The Ladies' Rest immediately became a valued civic amenity. Throughout the decades since, locals and visitors alike have been inspired to write letters to local newspapers and council staff, commending the facility and celebrating its architecture. The building had minimal change until 2004, when a large new addition was joined to its rear, containing an I-Site and unisex, men's and family ablutions. An ardent campaign to retain the Ladies' Rest as a women-only space demonstrated the building's continued social significance and relevance, and it remains in original use.

## 1 IDENTIFICATION OF PLACE

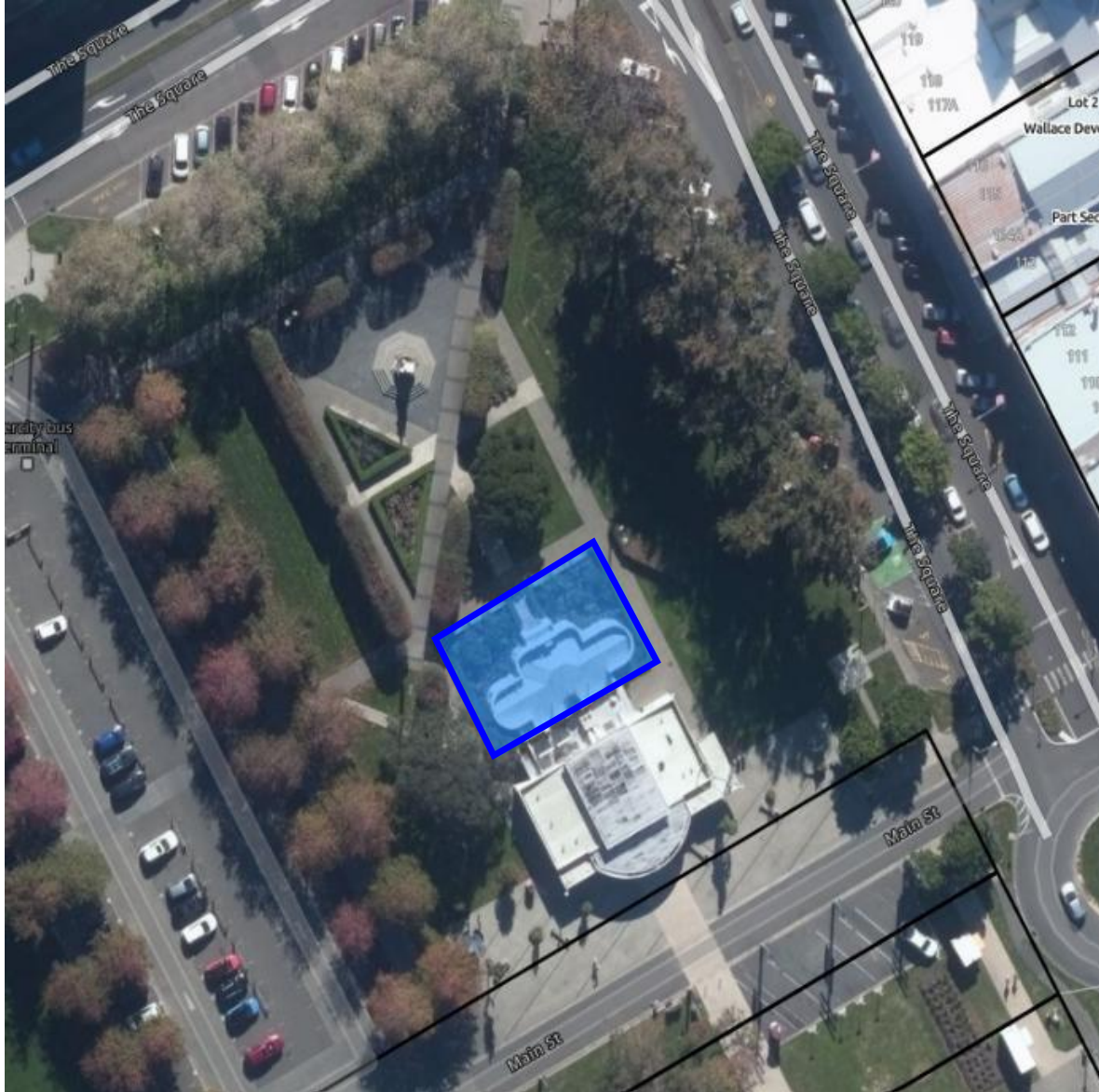
### 1.1 Name of Place

<b>Current</b>	Ladies' Rest
<b>Other Names</b>	Ladies Rest, Ladies Rest Rooms, Ladies Restroom, Women's Rest

### 1.2 Location Information

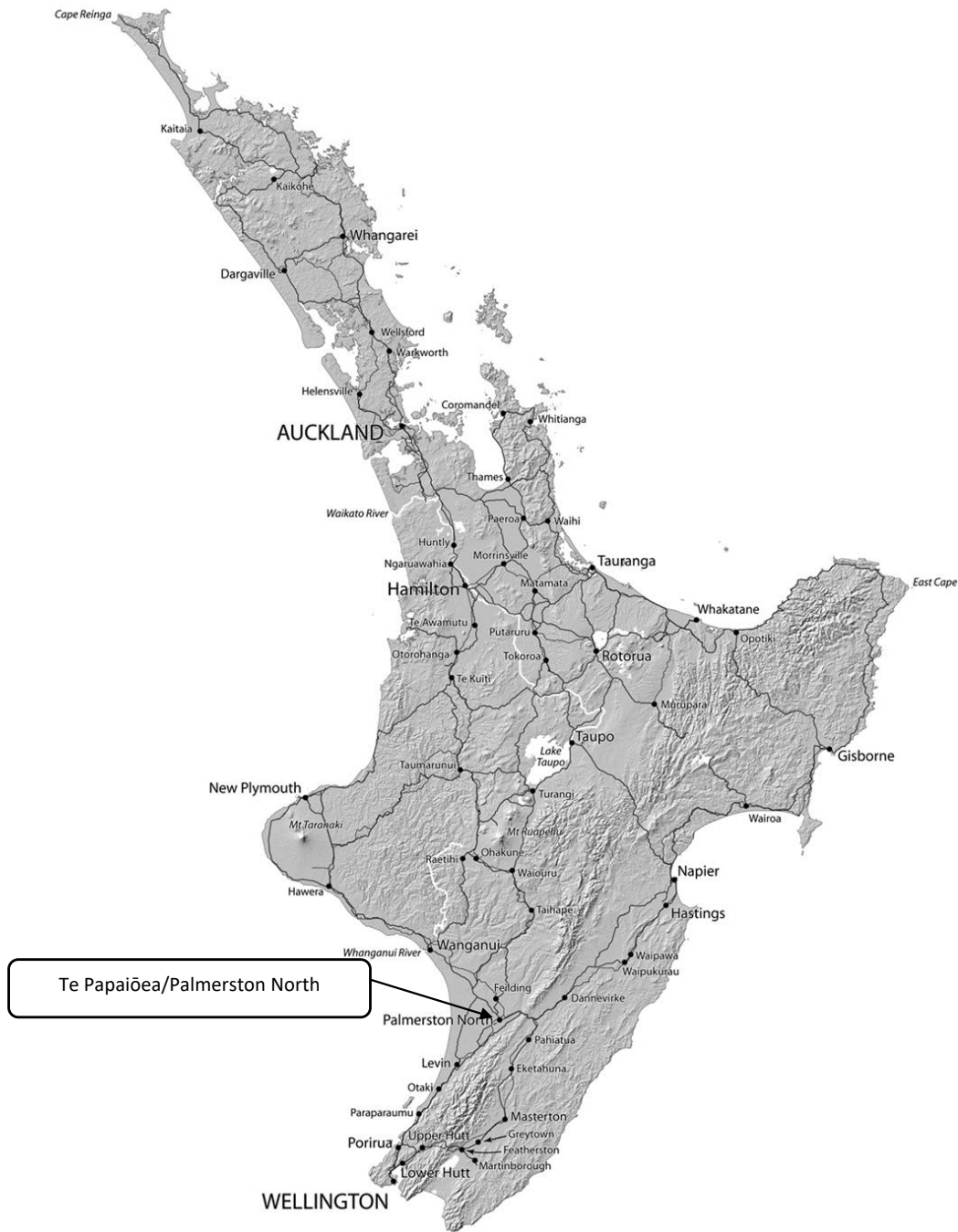
<b>Address</b>	The Square, PALMERSTON NORTH, Manawātū
<b>Legal Description</b>	Legal Road, Wellington Land District
<b>Additional Location Information</b>	E1821758, N5529501 (NZTM)
<b>Extent of List Entry</b>	Extent includes part of the land described as Legal Road, Wellington Land District, and the building known as Ladies' Rest thereon, including original lighting fixtures and the following chattels: ten lounge chairs; two highchairs. Extent does not include the 2004 additions to the south of the building comprising the I-Site and Men's, Unisex, After Hours and family toilets. (Refer to map of extent in Section 1.3 of the List Entry Report).

### 1.3 Map of Extent



**Figure 1** Indicative Map of Extent.

Source: Heritage New Zealand Pouhere Taonga Pātaka Database.



**Figure 2** Location Map of Te Ika-a-Māui / North Island of Aotearoa New Zealand highlighting the city of Palmerston North.



**Figure 3** Location of Ladies' Rest within Te Marae o Hine – The Square, in relation to other noted places.

Source: Heritage New Zealand Pouhere Taonga Pātaka Database.

## 2 SIGNIFICANCE ASSESSMENT

### 2.1 Assessment of Criteria for Entrance on the List

This place has been assessed for and found to possess aesthetic, architectural, historical, social, technological, significance or value as required under section 66 (1) of the Heritage New Zealand Pouhere Taonga Act 2014.

#### Aesthetic Significance or Value

The Art Deco styling of the Ladies' Rest, particularly the symmetry, curves, and decorative motifs, has substantial aesthetic value. The ornamental qualities of its exterior enhance the northern quadrant of Te Marae o Hine - The Square and are harmoniously complemented by its parklike setting. The interior plasterwork friezes and ceiling roses, light fittings, tiles, joinery and lounge furniture, contribute a sense of special attention to the otherwise mundane everyday experience of toileting or caring for young children, as well as a comfortable and restful atmosphere. The building's aesthetic charms have been acclaimed by the community—including those who may only appreciate it from the outside—throughout the decades.

#### Architectural Significance or Value

The architectural value of the Ladies' Rest is derived from the effective employment of the Art Deco style to advance the building far beyond the purely functional. Although added to at its rear, the building remains intact, authentic and readable as a good example of 1930s architecture. The symmetry of the central entrance with parapet, streamlined curved corners and semi-circular wings, and simple but effective geometric ornamentation, combines in a successful arrangement of structure and decorative detail.

#### Historical Significance or Value

The Ladies' Rest reflects the history of women's rights in New Zealand and the enabling of women to move beyond the domestic sphere, as well as the development of public sanitation in New Zealand urban centres. Although by the 1930s public toilets were considered a civic necessity, it was two decades after men's toilets were first provided in The Square that the first such facilities for women had been erected on the site in 1917. Although Palmerston North Borough Council was relatively early to build those dedicated women's public toilets, less than 20 years later it was acknowledged that they were not adequate, resulting in their demolition (to ground level) and the construction of the current building. This shows improved understanding of women's needs, hard-won by persistent lobbying.

The recycling of building materials and the relatively pared-back architectural style reflects the historical and economic situation of the time, just after the Great Depression.

#### Social Significance or Value

The term 'rest room' is not only a polite name for a public toilet but reflects the fact that rest rooms were designed to be places where women could rest, eat, feed or change a baby, and freshen up while away from

home. Women in Palmerston North have cared and taken responsibility for the Ladies' Rest, demonstrated over the years with numerous letters published in the local newspaper and sent to the council; and most recently, banding together in a campaign against its redevelopment to ensure the Ladies' Rest remains a place dedicated to serving women's needs.

**Technological Significance or Value**

Ladies' Rest was built in 1936, influenced by the new seismic regulations following the 1931 Hawke's Bay earthquake. Although the New Model Building By-Law NZSS 95:1935 was not compulsory for local authorities to adopt, Palmerston North Borough Council City Engineer John. R Hughes' design for the Ladies' Rest shows technological awareness of up-to-date engineering standards. Evidence of adherence to the new by-law is found in the drawings and specifications for the construction of the Ladies' Rest, as well in local newspaper articles.

**2.2 Assessment of Criteria to Assign a Category on the List**

This place was assessed against the criteria set out in section 66(3) of the Heritage New Zealand Pouhere Taonga Act 2014 and found to qualify as a Category 2 historic place under the following criteria: a, e, f, g, k.

**(a) The extent to which the place reflects important or representative aspects of New Zealand history.**

The provision of public toilets for women represents one aspect of women becoming equal citizens in New Zealand, recognising that women's freedom of movement and ability to participate in public life was restricted without such facilities. The Ladies' Rest is a particularly strong link to this as it is still currently a women's only rest room, providing an accurate illustration of early women's rest rooms in New Zealand. Women's rights in New Zealand contribute to New Zealand's modern identity as a progressive country. The history of the Ladies' Rest enriches New Zealand's story of empowering women.

The Ladies' Rest is also a reminder of the evolution of public sanitation in New Zealand towns and cities and the involvement of local people in determining their urban environment. By the 1930s public toilets were considered a necessary civic amenity for local authorities to provide to avoid the occurrence of 'nuisances' in the streets, however in earlier decades society exhibited different ideas of what was acceptable public behaviour. The domestic features of the Ladies' Rest reflect a 'civilised' ideal of its time.

**(e) The community association with, or public esteem for the place**

Ladies' Rest has long been valued by the local community, and visitors, as demonstrated by numerous letters of commendation and other displays of care throughout the decades. Protests were staged by women in Palmerston North between 2001-2004 to ensure the Ladies' Rest was kept intact and remained a women's only facility when the council were looking at development options. This sustained effort is a particularly

strong reflection of the continued high esteem for the Ladies' Rest, and Palmerston North City Council acknowledges the facility's status as a valued heritage asset.

**(f) The potential of the place for public education**

The Ladies' Rest, as a public building in largely original condition and which includes interpretative signage, has potential for public education about the development of public sanitation and women's history in Aotearoa New Zealand.

**(g) The technical accomplishment, value, or design of the place**

The Ladies' Rest has some technical value for its architectural style, construction methods and materials of the 1930s, particularly the period immediately after the implementation of the first major building code (NZSS 95: 1935, the New Zealand Model Building By-Law) that responded to the engineering lessons learned from the Hawke's Bay earthquake. As a reinforced masonry and concrete building with a low-rise profile without overhanging ornamentation, the Ladies' Rest directly reflects the contemporaneous understanding of earthquake resistance; the contract for the Ladies' Rest stipulates concrete, steel reinforcement and loading requirements, all of which were personally checked by the city engineer. By virtue of including sub-floor remains from an earlier period of construction, the building offers the opportunity for direct comparison of how building methods changed over a relatively short period of time.

The Ladies' Rest is also an intact, authentic exemplar of the 'rest room' style of public toilets for women, incorporating facilities for parenting as well as ablutions, in a suite of rooms designed to evoke a sense of the familiar and 'safe' domestic environment.

**(k) The extent to which the place forms part of a wider historical and cultural area**

As the Ladies' Rest is in Te Marae o Hine – The Square, it is a part of a wider historical and cultural area. The landscape has cultural and traditional significance to Rangitāne o Manawatū. The reserve has long been a civic gathering space and continues to play host to events, royal visits, protests, commemoration ceremonies, and general recreation. Its history as a space includes being given the name 'Te Marae o Hine' by mana whenua iwi in 1878. Physical markers conveying the concept of 'The courtyard of the daughter of peace' include a series of carvings installed in 1990. More recently the kaupapa of the name can be understood as the Rangitāne aspiration for Palmerston North to be a bicultural community founded on peace and inclusivity. Rangitāne signifiers of presence include the memorial to Te Peeti Te Awe Awe, the Kerei Te Panau clock face and chimes in the Hopwood Clocktower, and the mahi toi on the ground commemorating Ereni Te Awe Awe. The Coronation Memorial Fountain, War Memorial, Hopwood Clocktower and Hitching Post are further signifiers of the town's civic development in this significant cultural and historical landscape. The nature of the Ladies' Rest supports the function and cultural context of Te Marae o Hine - The Square as a gateway and refuge for visitors to the city centre.

### 3 SUPPORTING INFORMATION

#### 3.1 Historical Information

##### *Te Marae o Hine/The Square – a peaceful gathering place*

Negotiations for the Crown to purchase the Te Ahuaturangi block from Rangitāne o Manawatū were completed in 1864.<sup>1</sup> Soon after, Palmerston (later renamed Palmerston North) was surveyed and the beginnings of the town were established.<sup>2</sup> The population of Palmerston North gained momentum in the 1870s when the government's immigration and public works scheme enticed greater numbers of people to the area.<sup>3</sup> The town plan by John Tiffin Stewart included a central open reserve for communal use.<sup>4</sup> Known commonly as The Square, in 1878 two influential Rangitāne o Manawatū rangatira, Te Peeti Te Aweawe and Hoani Meihana Te Rangiotū, asked associated iwi to suggest a new name for the space.<sup>5</sup> Mātene Te Whiwhi (Ngāti Raukawa) offered 'Te Marae o Hine' ('Courtyard of the Daughter of Peace') in memory of his ancestor Te Rongorito, who had forbidden any conflict. The intention behind this name has carried through the years. The name was formally re-dedicated in the 1990 Sesquicentennial celebrations, where pou whenua were installed in Te Marae o Hine as markers of the history and presence of Rangitāne o Manawatū in Palmerston North.<sup>6</sup>

The Square also hosts civic events such as Anzac Day commemorations centred on the War Memorial there, and the Festival of Cultures.<sup>7</sup> Plantings, a Coronation Memorial fountain, clocktower, lakelet and other features contribute to the parklike nature of The Square's cultural and historic landscape.

<sup>1</sup> 'Rangitāne o Manawatu and the Trustees of the Rangitāne o Manawatu Settlement Trust and the Crown Deed of Settlement of Historical Claims', 2015, p.10

<sup>2</sup> Malcolm McKinnon, 'Manawatū and Horowhenua places - Palmerston North', *Te Ara - the Encyclopedia of New Zealand*, <http://www.TeAra.govt.nz/en/manawatu-and-horowhenua-places/page-5>, accessed 27 August 2025

<sup>3</sup> *ibid*

<sup>4</sup> *ibid*

<sup>5</sup> Pers comm. Warren Warbrick and Peter Te Rangi, Rangitāne o Manawatū, at Rangitāne o Manawatū Settlement Trust office, Palmerston North, 18 May 2026; Peter Meihana and Hone Morris, 'Tangata Whenua: Mā tatou e whakaoti' in Tennant, M., Watson, G., and K. Taylor (Eds), *City at the Centre: A History of Palmerston North*, Massey University Press, Auckland, 2020, pp.41-42

<sup>6</sup> The pou have changed over the years; they originally numbered nine but some have been removed since, and two more were added in 2021. Pers comm. Warren Warbrick to Blyss Wagstaff, 24 May 2026; Palmerston North City Council, 'Programme for Gathering in Te Marae o Hine', March 3 1990, 2017Pa\_A175-71-1\_013762, Manawatū Heritage, URL: <https://manawatuheritage.pncc.govt.nz/item/08fffc7a-111d-492b-b46d-0df0d78a8a4b#tab-item-description>, accessed 9 July 2025

<sup>7</sup> Explore Palmerston North, 'Te Marae o Hine (The Square): Palmerston North's Cultural Heart and Community Hub', <https://explorepalmerstonnorth.co.nz/te-marae-o-hine-the-square/>, accessed 29 August 2025, Palmerston North City Council, 'Festival of Cultures 2026', <https://www.pncc.govt.nz/News-Events/Events/Festival-of-Cultures>, accessed 21 May 2026



**Figure 4** An aerial view of The Square in 1973, looking north to south. The Ladies' Rest is in the lower left section, with the bus station behind it. The Coronation Memorial Fountain (since relocated) is in the lower right corner, the Clocktower and War Memorial in the centre, Te Peeti Te Awe Awe statue in the upper left section and Butterfly Lake in the upper right corner. *Manawatu Evening Standard*, 26 February 1973, Manawātū Heritage (2007N\_Pn8\_SQU\_0449).

### Public Toilets

From 1890 Palmerston North began building basic wastewater infrastructure, with untreated sewage initially being deposited in the Manawātū River.<sup>8</sup> As historian Caroline Daley notes, in the early years of European settlement, New Zealand men and women were allowed to urinate in the street.<sup>9</sup> However, it was soon outlawed for men as indecent exposure.<sup>10</sup> For women it was possible to urinate without anyone knowing, as they had crotchless underwear and could discreetly stand over a gutter.<sup>11</sup>

Up until the early twentieth century there were no designated public toilets for women in New Zealand.<sup>12</sup> Women (and their children) were expected to use railway station or shop facilities, and as a result did not often go out for long periods of time or after business hours.<sup>13</sup> It was argued by town planners and councilmen that women did not need public toilets, as their domain was the domestic. They also argued that women would not use designated

<sup>8</sup>Russell Poole, 'Building the City', in Tennant, M., Watson, G., and K. Taylor (Eds), *City at the Centre: A History of Palmerston North*, Massey University Press, Auckland, 2020, p.112. This only served part of the borough, with other areas carting sewage out by night cart; Dorothy Pilkington, 'Spending a penny: public rest rooms for women in Palmerston North', *The Manawātū Journal of History*, 2009, Issue 5, p.5

<sup>9</sup>Caroline Daley, 'Flushed with Pride? Women's Quest for Public Toilets in New Zealand', *Women's Studies Journal*, 2000, 16(1), pp. 99,107

<sup>10</sup>Pilkington, 2009, p.6

<sup>11</sup>Annabel Cooper, Robin Law, Jane Malthus, and Pamela Wood, 'Rooms of Their Own: public toilets and gendered citizens in a New Zealand city, 1860-1940', *Gender, Place and Culture*, 2000, Vol 7 No. 4, p.421

<sup>12</sup>ibid, p.418

<sup>13</sup>Daley, 2000, p.100; Pilkington, 2009, p.7

public toilets, on account of them being too public.<sup>14</sup> Civic facilities like town halls and courthouses were often designed without toilets for women.<sup>15</sup>

The need for public toilets as a standalone facility became greater as transport improved and more public gathering places and shops were opened. Men had clubs, hotels, and bars they could visit to use the toilet; however, women were not allowed in those places, and shop owners did not appreciate their premises becoming thoroughfares for people using their facilities.



**Figure 5** This image captured women in The Square in 1909, with the men’s toilets (brick building) behind them, almost a decade before the Square’s first women’s toilets were built. ‘People beside the lakelet in The Square’, c.1910, Postcard - unknown photographer, Manawatū Heritage (2007P\_Sq146\_SQU\_0464)

One of the earliest records acknowledging the need for ladies’ conveniences in Palmerston North was published in *White Ribbon*, the magazine of the New Zealand Women’s Christian Temperance Movement (NZWCTU).<sup>16</sup> The magazine had a section reporting on rest rooms available to women in most of the major towns in New Zealand at the time. The April 1915 issue noted that Palmerston North had a public rest room being cared for by four Union members. The rest room was not in a popular part of town, the report notes, but it was still a great convenience to women.<sup>17</sup> The location of this facility, set up in a pre-existing building, is unknown.<sup>18</sup>

*Ladies’ conveniences in Te Marae o Hine – The Square*

The first public conveniences in Te Marae o Hine - The Square were built in 1898, consisting of men’s urinals located near the Butterfly Lake.<sup>19</sup> Nearly twenty years later, in 1916, ladies’ facilities were designed in the northeast of The Square, consisting of separate blocks for toilets and a rest room, opened by October 1917.<sup>20</sup> This was notably one of the few council-provided public toilets for women at that time, outside of the four main centres (Auckland,

<sup>14</sup> Daley, 2000, p.100

<sup>15</sup> Cooper, Law, Malthus, and Wood, 2000, p.420

<sup>16</sup> R. Dalziel, ‘New Zealand Women’s Christian Temperance Union’, New Zealand History, 2018, <https://nzhistory.govt.nz/women-together/new-zealand-womens-christian-temperance-union>, accessed 2 September 2025

<sup>17</sup> E. Howard, ‘Rest and Refreshment Booths’, *White Ribbon*, Vol 20, Issue 238, 19 April 1915, <https://paperspast.natlib.govt.nz/periodicals/WHIRIB19150419.2.51>, accessed 2 September 2025

<sup>18</sup> Pilkington, 2009, pp.7-9

<sup>19</sup> ‘Town Clerk’s Letterbook No.2 (1882 - 1902’, 12 October 1898, PNCC 1/8/1 Volume 2, p.564, Ian Matheson City Archives, Palmerston North

<sup>20</sup> See architectural plans, Pilkington, 2009, pp.8-9; ‘Page 1 Advertisements Column 1’, *Manawatu Times*, 27 October 1917, p.1

Wellington, Christchurch, Dunedin).<sup>21</sup> The toilets were built below ground, presumably to offer women discretion.<sup>22</sup> However, this limited their accessibility for users with mobility issues or young children and pushchairs in tow.

Within a decade, calls for improved ladies' conveniences had gathered pace.<sup>23</sup> The original toilets were not meeting women's needs due to their limited opening hours and 'most unhealthy' condition - many underground buildings had issues with lighting, ventilation and drainage.<sup>24</sup> By 1928, it was reported that Council had resolved to build a new women's facility but could not agree on a suitable site.<sup>25</sup> By 1932 the topic regularly appeared in the local newspapers.<sup>26</sup> Four years later the City Engineer was instructed to prepare a design and estimate for erecting a

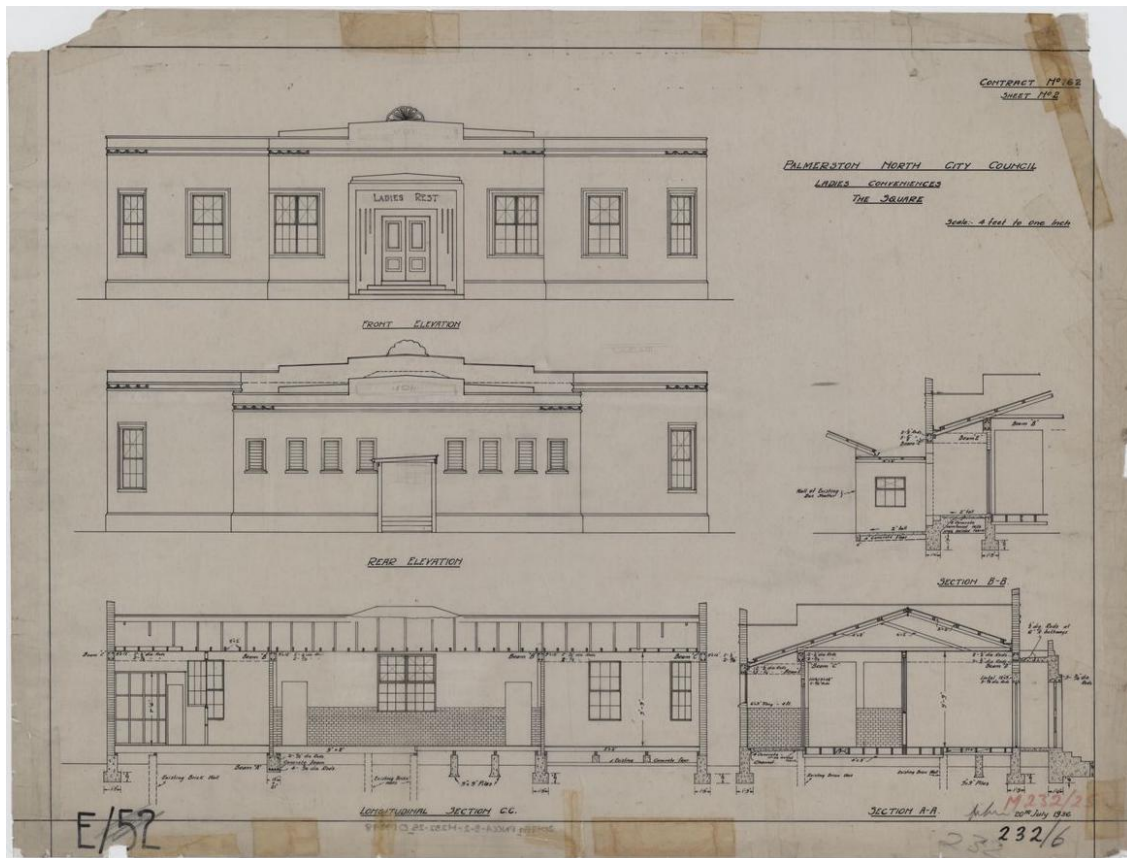


Figure 6 PNCC 4/8/2 Plan M 232/25, page 1, (2017Pa\_PNCC4-8-2-M232-25\_019998), 20 July 1936.

Manawatū Heritage, [By Attribution Alone](#).

<sup>21</sup> Pilkington, 2009, p.9

<sup>22</sup> *ibid*

<sup>23</sup> 'Ladies' Conveniences', *Manawatu Standard*, 3 December 1928, p.8; 'Public Convenience', *Manawatu Herald*, 11 December 1928, p.2; 'Women's World', *Manawatu Standard*, 23 May 1929, p.9; 'The By-Election', *Manawatu Standard*, 29 May 1929, p.4

<sup>24</sup> Pilkington, 2009, p.9

<sup>25</sup> 'Public Convenience', *Manawatu Herald*, 11 December 1928, p.2

<sup>26</sup> 'Ladies' Rest Room', *Manawatu Standard*, 2 August 1932, p.2; 'Earthquake-proof Buildings', *Manawatu Standard*, 3 August 1932, p.2; 'Rest Room Attendant', *Manawatu Standard*, 16 August 1932, p.2

suitable building housing a ladies' rest room and toilets in The Square, on the site of the 1917 women's toilets.<sup>27</sup> The project included some remodelling of the existing bus shelter, to which the new building would attach at its rear.<sup>28</sup>

#### *Ladies' Rest 1936 – current*

The decision to proceed with construction was made in June 1936.<sup>29</sup> Ladies' Rest was designed by the city council engineering department, and proposals were presented to the council in June 1936 by department head Mr John R. Hughes. As well as building on the existing walls of the 1916 toilet building, many of the original fixtures and fittings were also reused to save cost, including the coin-slot cubicle entrance locks so users would continue to 'spend a penny' and Council could accrue funds to assist with upkeep.<sup>30</sup> The build cost was £1857, tendered by A.W. Wood & Sons in August 1936.<sup>31</sup> Newspaper coverage notes that the plans were referred to the Mayoress—Mrs A. E. Manson—and Mrs M. Aitchison for review and selection of furnishings, in a nod towards female input amidst the male-dominated Works Committee.<sup>32</sup>

Ladies' Rest was constructed in the Art Deco style. Art Deco was popularised in New Zealand following the rebuilding of much of the Napier town centre in that style, after the 1931 earthquake that devastated that city's town centre. Art Deco was considered safe for earthquake-prone areas due to the lack of overhanging ornamentation and focus on low-relief surface decoration.<sup>33</sup> The Hawke's Bay earthquake had a direct effect on the design of the Ladies' Rest, due to new regulations for structural design, and council staff likely being able to observe the work being done in Napier and Hastings.<sup>34</sup> 1935 seismic building standards - the Model Building By-Laws (NZSS 95:1935) - promoted the use of 135-degree stirrup hook-bars in reinforcing steel.<sup>35</sup> This type of stirrup hook is in evidence in this building's design, and the Ladies' Rest contract also included very specific details for cement quality.<sup>36</sup> Recycled fixtures and fittings made the building of Ladies' Rest relatively economical.

<sup>27</sup> 'City Administration', *Manawatu Times*, 3 March 1936, p.8

<sup>28</sup> City Engineer J. R. Hughes stated "In conjunction with the rebuilding of the ladies rest room, certain minor alterations will be required to the bus shelter, and as I have been instructed to prepare plans of additional accommodation for the traffic manager I have incorporated the two proposals into one plan...Provision is made for a clerk's room and public counter, a small office for the manager, and an enlargement of the manager's present office for use by the busdrivers. The present busdrivers' room will be done away with and the space incorporated in the public shelter." 'Bus Shelters', *Manawatu Standard*, 16 June 1936, p.5.

<sup>29</sup> 'Ladies' Rest Room', *Manawatu Standard*, 16 June 1936, p.11; 'Bus Shelters', *Manawatu Standard*, 16 June 1936, p.5

<sup>30</sup> Matthews & Matthews Architects Ltd, 'Ladies Rest Room, The Square, Palmerston North: Cultural heritage Assessment', unpublished client report for Palmerston North City Council, October 2001, p.6

<sup>31</sup> *ibid*, p.7

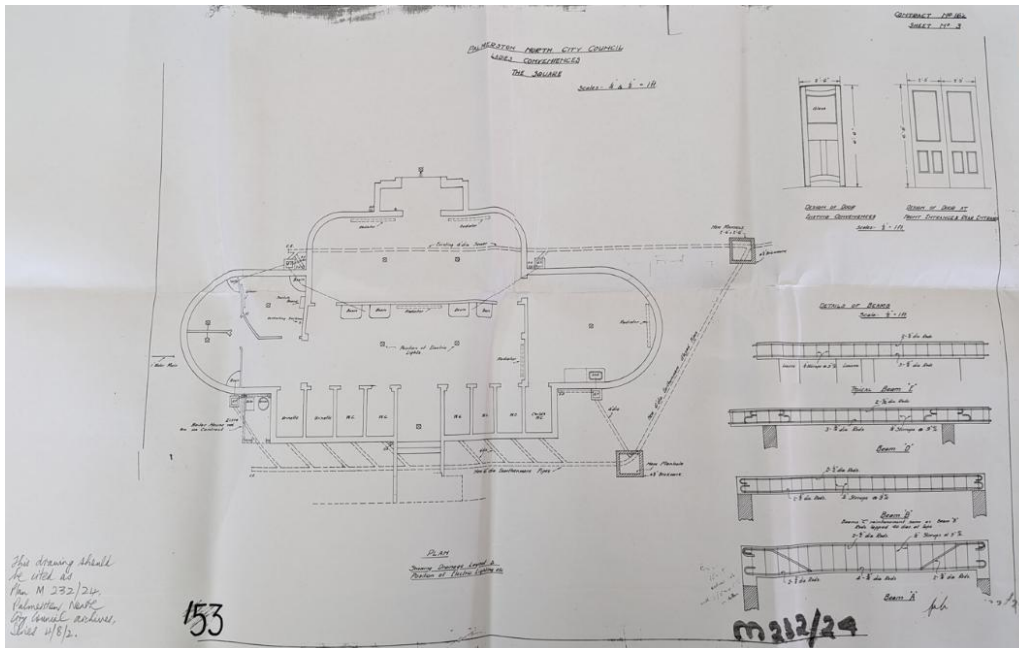
<sup>32</sup> 'Ladies' Rest Room', *Manawatu Standard*, 16 Jun 1936, p.11; 'Ladies' Rest Room', *Manawatu Standard*, 17 December 1936, p.2; 'A Rest Room of which to be proud', *Manawatu Times*, 17 December 1936, p.23

<sup>33</sup> Art Deco Trust, 'What is Art Deco?', 2023, <https://www.artdeconapier.com/art-deco-2/>, accessed 3 September 2025

<sup>34</sup> Matthews & Matthews Architects Ltd, 2001, p.12; Alistair P. Russell and Jason M. Ingham, 'Prevalence of New Zealand's Unreinforced Masonry Buildings', *Bulletin of the New Zealand Society for Earthquake Engineering*, Vol 43, no.3, September 2021, pp. 196

<sup>35</sup> Ministry of Business, Innovation and Employment, *Engineering Assessment Guidelines: The Seismic Assessment of Existing Buildings: C5: Concrete Buildings*, July 2017, p.C5-13, <https://www.building.govt.nz/assets/Uploads/building-code-compliance/b-stability/b1-structure/seismic-assessment/c5-concrete-buildings.pdf>, accessed 16 October 2025

<sup>36</sup> Matthews & Matthews Architects Ltd, 2001, p.58



**Figure 7** Copy of Plan M 232/24, Series 4/8/2, 20 July 1936 (Ian Matheson City Archives, photographed by Jessica Delman, 2021) showing beam detail and 135-degree hooked reinforcing bars, specified as ‘The reinforcement steel shall be carefully bent to the size and shape as shown on drawing’. ‘Specifications’, 1936, appended in Matthews & Matthews Architect Ltd, ‘Ladies Rest Room, The Square, Palmerston North: Cultural Heritage Assessment’, unpublished client report for Palmerston North City Council, October 2001, p.55

The building, including the redeveloped bus shelter, opened on 21 December 1936.<sup>37</sup> The modern, sunny, and scrupulously clean facility immediately became a valued community amenity. Women used it to change clothes after work for a night on the town. Mothers appreciated the comfortable room for changing and feeding their children, noting the challenges of breastfeeding in public otherwise.<sup>38</sup> Their children were intrigued by the smaller toilet specially sized for them.<sup>39</sup> The lounge was used as a space to relax, eat lunch and do some knitting.<sup>40</sup> Locals and visitors alike were inspired to write letters commending the facility to local newspapers and council staff.<sup>41</sup> All were grateful for the care and security provided by the attendants, who were on shift until 10.30pm, including the thoughtful touches such as fresh flower arrangements supplied by attendant Margaret Symes in later years.<sup>42</sup> Barbara Thompson, who worked there between 1944 and 1971, is noted as the longest-serving staff member.<sup>43</sup>

<sup>37</sup> Matthews & Matthews Architects Ltd, 2001, p.7

<sup>38</sup> ‘No men here, say loo ladies’, *Manawatu Standard*, 13 November 2002, p.1

<sup>39</sup> Russ, C., *Ladies Rest – Photo exhibition, 2001*, <https://Manawatuheritage.pncc.govt.nz/item/63083cf2-61fa-4b0f-9b2e-3428a946c840>, accessed 3 September 2025

<sup>40</sup> *ibid*

<sup>41</sup> Including a letter published in *The Manawatu Standard* in 1977 describing the Ladies’ Rest as a ‘landmark of recommendation’: ‘Rest Room Bouquet’, *Manawatu Standard*, 12 December 1977; ‘Letter from Jill Friar to The Mayor, Palmerston North City Council’, 5 March 1991, Ian Matheson City Archives, Palmerston North; ‘Incentives for the city’, *Evening Standard*, 20 September 2000, in which Mary and Hannah Nash proclaimed “The Ladies Rest Room was described [by the council] as a mere ‘public convenience’ but it is much more than that. It is a perfect example of Art Deco architecture, with furnishings to match. It has been well kept, as long as we have lived in this city (since 1978). By this we mean it is scrupulously clean, it usually has flowers in each cubicle as well as by the washbasin, it is safe and airy and provides excellent facilities for mothers with small children, including children’s toilets. We have travelled all over New Zealand without seeing a better facility.”

<sup>42</sup> ‘Rest room bouquet’, *Manawatu Standard*, 12 December 1977; ‘The Ladies of the Ladies’ Rest’, *Manawatu Standard*, 9 November 2013, p.2

<sup>43</sup> *ibid*



**Figure 8** Ladies' Rest Rooms, The Square, 1939. Photograph by K H Shea. Manawatu Heritage, Public Photograph Collection Bm 5 (2008P\_Bm5\_BUI\_1958)



**Figure 9** The facilities were no doubt well-used on 9 May 1945, as the procession around The Square to celebrate peace with Germany in World War Two passed by. The bus shelter at the rear of the Ladies' Rest is also visible in this image.

'Victory in Europe Parade, The Square', photographer unknown, 9 May 1945, Manawatu Heritage, Public Photo Collection Wwt 8 (2008P\_Wwt8\_WHF\_2000), [CC BY 4.0](https://creativecommons.org/licenses/by/4.0/).

The architecture has often been commended too.<sup>44</sup> In 1985, David Jackson, President of the Royal Australian Institute of Architects, singled out the Ladies' Rest as one of the city's architecturally inspired buildings.<sup>45</sup>

In 1957 the Ladies' Rest again triggered conversations about gender equality. It became apparent that the building was in need of repair, and this brought to light the lack of women in council. The rest rooms at the time were described as being in a 'shocking and deplorable' state, which had been regularly reported by head attendant Barbara Thompson.<sup>46</sup> Without women representatives on the council to advocate for action, council leadership overlooked the issue because, 'Being men, it is not where we go.'<sup>47</sup> Locals consequently questioned the lack of gender diversity in their representatives, electing their first female councillor, Julia Wallace, in 1962.<sup>48</sup>

The building has had minimal change over the years. In 1949 the council commissioned an addition: a small brick entrance porch with steps (since removed) to provide direct access to the parents' room; the doorway was created from a window opening.<sup>49</sup> The porcelain handbasins were replaced in 1967.<sup>50</sup> The external steel-framed windows were replaced with aluminium joinery, probably in the 1970s.<sup>51</sup> A non-physical change was made in 1985 with the permitting of male caregivers to the Mothers' Room.<sup>52</sup>

*'A wee room of their own'*

In 2000, however, the building was affected by a larger project—'City Heart'—to improve The Square.<sup>53</sup> Palmerston North City Council proposed to redevelop the Ladies' Rest to link with an information centre and unisex toilet block.<sup>54</sup> Over the next few years, the resulting public debate and hearing clearly demonstrated the value of this building to women in Palmerston North, who wanted to keep 'the wee room of our own' as a separate structure.<sup>55</sup> Community Action by Mothers and Existing Other users of Ladies' Rest (CAMEO) was established to oppose the proposed changes, creating leaflets and staging protests where they sang about the Ladies' Rest, including during a council meeting.<sup>56</sup> Photographer Catherine Russ documented the Ladies' Rest for an exhibition, collating quotes that showed how much the amenity—and its Art Deco architecture—was appreciated.<sup>57</sup> Many others wrote to local

<sup>44</sup> One example of many is a letter received by the council in 1987, where two local women described the Ladies rest as a 'fine facility', especially noting the ceilings and light fixtures and the preserved style; they also reflected that it must be 'the finest in NZ'. Dickinson, P.M. and Joyce, M. Letter to Palmerston North City Council regarding Ladies Rest, September 1987, Ian Matheson City Archives.

<sup>45</sup> 'Aussie architect praises gem of a loo', *Manawatu Standard*, 29 May 1985

<sup>46</sup> 'The Ladies of the Ladies' Rest', *Manawatu Standard*, 9 November 2013, p.2

<sup>47</sup> *ibid*

<sup>48</sup> Mary D. Davies, 'Wallace, Julia Nannie', Dictionary of New Zealand Biography, first published in 2000, *Te Ara - the Encyclopedia of New Zealand*, <https://teara.govt.nz/en/biographies/5w3/wallace-julia-nannie>, accessed 9 September 2025

<sup>49</sup> Matthews & Matthews Architects Ltd, 2001, p.8

<sup>50</sup> *ibid*

<sup>51</sup> *ibid*

<sup>52</sup> Russ, *Ladies Rest – Photo exhibition, 2001*

<sup>53</sup> 'City opens up Square to visitors', *Manawatu Standard*, 15 November 2002, p.1; 'Hearing turns ear to Square toilet plan', *Manawatu Standard*, 19 December 2002, p.3

<sup>54</sup> 'City opens up Square to visitors', *Manawatu Standard*, 15 November 2002, p.1; 'Women to protest new loo plan', *Dominion Post*, 21 November 2002, p.A7; 'High time to speak up on loo issues', *The Tribune*, 5 November 2000

<sup>55</sup> 'Fight brewing over ladies' loos in Square', *The Tribune*, 10 November 2002, p.1; 'No men here, say loo ladies', *Manawatu Standard*, 13 November 2002, p.1; 'Hearing turns ear to Square toilet plan', *Manawatu Standard*, 19 December 2002, p.3

<sup>56</sup> 'Women to protest new loo plan', *Dominion Post*, 12 Nov 2002, p.A7; 'Loo protest uses song to make a point', *Dominion Post*, 13 Nov 2002, p.A8; 'Mothers plan to encircle toilets', *The Evening Standard*, 7 November 2002, p.3; 'Restroom plan to go ahead', *Evening Standard*, 9 November 2000; 'On the Throne', *Guardian*, 15 March 2001

<sup>57</sup> Russ, *Ladies Rest – Photo exhibition, 2001*

publications opposing proposed plans, though some also supported the idea to develop the Ladies' Rest into unisex toilets.<sup>58</sup> The result was a compromise, with the upgraded Ladies' Rest remaining a space for women only (including the Mothers' Room), and the I-Site, unisex, family and men's facilities added to the rear of the building in a complementary style, opened in 2004.<sup>59</sup>



**Figure 103** 'Protestors Outside Ladies Rest', Colin Rush, 2002, Manawatū Heritage (2010P\_IMCA-DIGITALMASTER\_004344). [CC BY 4.0](https://creativecommons.org/licenses/by/4.0/)



<sup>58</sup> For example, 'Letters', *Evening Standard*, 12 December 2000; 'Loo decision upsets group', *Evening Standard*, 11 November 2000, p.3; 'Loos not for sharing', *Evening Standard*, 6 December 2000; 'Letters to the Editor', *Evening Standard*, 14 November 2002, p.10; 'Ladies' Unrest', *Manawatu Evening Standard*, 19 November 2002, p.3; 'Letters to the Editor', *Manawatu Evening Standard*, 20 November 2002 p.11 and 21 November 2002 p.12

<sup>59</sup> The revamped facility reopened on 15 March 2004. 'Ladies have place to rest again', *Manawatu Standard*, 12 March 2004, p.3; 'Square's classic loos reopen', *Manawatu Standard*, 16 March 2004, p.1; 'City loos a hit with community', *Guardian*, 18 Mar 2004, p.7

### 3.2 Physical Information

#### Setting

Te Marae o Hine - The Square was designed at the centre of the grid of Stewart’s town plan of Palmerston North. Previously bisected by the railway and having had various layouts over the decades, today the reserve consists of landscaped quadrants with a central strip in alignment with Main Street.<sup>60</sup>

A marble statue of Rangitāne o Manawatū rangatira Te Peeti Te Awe Awe (List No. 1272), erected by his sister Ereni Te Awe Awe in 1907, is the centrepiece of the southeastern quadrant.<sup>61</sup> The monument bears Te Awe Awe’s dying words: ‘Kua kaupapa i au te aroha, mā koutou e whakaoti’: ‘I have laid the foundation of friendship for you to bring to completion’.<sup>62</sup> Ereni herself is also paid tribute to with a cultural expression, named *Kua kākahutia te rangimarie* (‘under the cloak of peace’), on the ground around the Hopwood Clocktower that stands in the centre of The Square, conceptually representing the tāniko border of a kaitaka (finely woven cloak) she is seen wearing in a portrait.<sup>63</sup> Completed in 1957, the Hopwood Clocktower was the result of a donation from local businessman Arthur Hopwood in 1953. It holds a clock originally installed in the Post Office in 1906, named to commemorate Rangitāne o Manawatū chief Kerei Te Panau.<sup>64</sup>

DRAFT

<sup>60</sup> For example, ‘The Square with snow’, July 27 1939, [Public Photograph Collection Sq 176a](https://manawatuheritage.pncc.govt.nz/item/3da9c3d0-b849-44cd-88e9-c1ce5acd93a9#resource_info) (2014N\_Sq176a\_008625), Manawatu Heritage, [https://manawatuheritage.pncc.govt.nz/item/3da9c3d0-b849-44cd-88e9-c1ce5acd93a9#resource\\_info](https://manawatuheritage.pncc.govt.nz/item/3da9c3d0-b849-44cd-88e9-c1ce5acd93a9#resource_info)

<sup>61</sup> Te Peeti Awe Awe Memorial, Category 2 historic place, List No. 1272, <https://www.heritage.org.nz/list-details/1272/Te%20Peeti%20Awe%20Awe%20Memorial>; Mason Durie, ‘Te Aweawe, Te Peeti’, Dictionary of New Zealand Biography, first published in 1990, updated November 2024, *Te Ara - the Encyclopedia of New Zealand*, <https://teara.govt.nz/en/biographies/1t27/te-aweawe-te-peeti>, accessed 30 October 2025

<sup>62</sup> Meihana and Morris, 2020, p.42

<sup>63</sup> Palmerston North City Council, ‘Rangitāne Ancestral leader honoured in Te Marae o Hine The Square’, <https://www.pncc.govt.nz/News-Events/News/Rangit%C4%81ne-ancestral-leader-honoured-in-Te-Marae-o-Hine-The-Square>, accessed 24 September 2025

<sup>64</sup> Pers comm. Warren Warbrick and Peter Te Rangi, Rangitāne o Manawatū, at Rangitāne o Manawatū Settlement Trust office, Palmerston North, 18 May 2026; *Manawatu Evening Standard*, ‘New Palmerston North Clock Tower, The Square’, *Manawatu Heritage*, <https://manawatuheritage.pncc.govt.nz/item/b363de9e-1ef6-41ed-beb1-33a22572411c>, accessed 24 September 2025; *Manawatu Standard*, ‘Back Issues: A lesson on the life of Ereni Te Awe Awe’, 21 January 2023, *Manawatū Heritage*, <https://manawatuheritage.pncc.govt.nz/item/9100a943-3588-426c-8908-729c46b1006b>

Immediately to the north of the clocktower is the War Memorial, designed by F.V. Blundstone and dedicated by Prime Minister Gordon Coates in 1926.<sup>65</sup> To the west of the clocktower stand four pou installed in 1990, carved by John Bevan Ford and Warren Warbrick. Two pou installed in 2021, portraying Rongorito and Hineapounamu, were also carved by Warren Warbrick. Together the pou honour the significance of the name ‘Te Marae o Hine’.<sup>66</sup> In the same vicinity, a stone carving by Warren Warbrick made on site during the 2000 PRiME Stone symposium, honours Rangitāne rangatira Hoani Meihana Te Rangiotū.<sup>67</sup> At the south edge of The Square is a hitching post, the last remaining one of eight thought to have been built by the Borough Council in 1901 (List No. 1259).<sup>68</sup> Also in the south quadrant is a butterfly-shaped lakelet which has been a recreational attraction since 1909.<sup>69</sup>



**Figure 11** The main entrance at the north of the building, amidst landscaping. Anna Renton-Green, 24 October 2024, HNZPT.

A single lane on the alignment of Main Street runs west-east through Te Marae o Hine - The Square and essentially divides the reserve in two. The northern half is further bisected by a vehicle access lane for Intercity buses and car parking.

<sup>65</sup> Matthews & Matthews Architects Ltd, 2001, p.4

<sup>66</sup> Pers comm. Warren Warbrick to Blyss Wagstaff, 24 May 2026

<sup>67</sup> *ibid*; <https://www.flickr.com/photos/129472387@N07/47130927091/in/album-72157676188804447s>

<sup>68</sup> Hitching Post, Category 2 historic place, List No. 1259, <https://www.heritage.org.nz/list-details/1259/Hitching%20Post>; *Manawatū Standard*, ‘Hitching posts lost to time and space’, 6 May 2023, p.2, Manawatū Heritage, <https://manawatuheritage.pncc.govt.nz/item/40598887-f0f1-4968-8fca-70e656981d12>, accessed 21 May 2026

<sup>69</sup> Matthews & Matthews Architects Ltd, 2001, p.4

The Ladies’ Rest sits to the east of this lane, in the northeast quadrant of The Square. Access can be gained from the south through the I-Site addition that opens onto the Main Street thoroughfare, however the main entrance as designed in 1936 still exists, at the north of the building. This formal entrance, and the ornamental façade of the building, is prominent amidst the gardens that surround the Coronation Fountain (List No. 1258), which sits to the north of the Ladies’ Rest. The fountain, constructed in 1902 to commemorate the coronation of King Edward VII, is in its third location within The Square, having moved from the centre to make way for the War Memorial, then from the northwestern quadrant to provide a cleared space there for large events such as the Rural Games and Festival of Cultures.<sup>70</sup>



**Figure 12** The northern and eastern facades, with the 2004 I-Site addition to the rear just visible. Anna Renton-Green, 24 October 2024, HNZPT.

*Exterior*

The northern elevation of the Ladies’ Rest is striking in its presentation of Art Deco stylistic features. A central entranceway reached by a set of three curved steps is flanked symmetrically by curved wings. The reinforced brick construction is rendered with textured cement plaster. The shallow-pitched double-gabled roof is hidden behind a parapet so the roof appears flat.

<sup>70</sup> Coronation Memorial Fountain (List No. 1258), <https://www.heritage.org.nz/list-details/1258/Coronation%20Memorial%20Fountain>; ‘Coronation Fountain’, *Manawatu Standard*, 11 August 1902, p.4; Pers comm. Warren Warbrick to Blyss Wagstaff, 24 May 2026

Cement-plaster mouldings provide restrained decoration. The original specification suggests the plaster was tinted with three colours; this has now been painted over.<sup>71</sup> The parapet features a simple geometric motif of a central circle bracketed on each side by crescents that sit above the entrance portico, and below this a frieze of stylised festoons extends around the building. The entrance porch features the name ‘Ladies’ Rest’ emblazoned above the doorway, and three vertical lines of graduating lengths provide simple geometric adornment either side of the doorway. A bay of three multi-paned windows curves around each of the rounded corners. Window and door surrounds are banded in shallow relief.

Set back slightly from the entrance façade, semi-circular wings protrude further to the east and west. These are lit by three windows spaced around the curve of each wing. All original steel window joinery (which used to feature ‘union jack’ patterns in the upper half of each multi-paned sash) in the building has been replaced with aluminium joinery.



**Figure 13** The eastern wing, which contains the Mothers’ Room. Anna Renton-Green, 25 September 2025, HNZPT.

The original 1936 building terminated in a rectilinear wing at its south (with central corridor leading to the bus shelter), but this south elevation has now been obscured by the 2004 addition that attaches to it. Accessible from west and east, the new addition abuts the old via a corridor decorated with historic photos and archival plans of the building. Contained in the new addition, Unisex, Men’s and Family toilets and a shower lead from this corridor. A central ramp bridges north from there into the cubicle area of the Ladies’ Rest.



**Figure 14** The junction between the rear of the Ladies’ Rest and the 2004 addition showing eastern entrance to the toilet corridor and I-Site complex. Anna Renton-Green, 25 September 2025, HNZPT.



**Figure 15** The internal ramp between the original building and the 2004 addition. Anna Renton-Green, 25 September 2025, HNZPT.

<sup>71</sup> ‘APMC coloured cement’ was specified. Matthews & Matthews Architects Ltd, 2001, p.12

*Interior*



**Figure 16** The vestibule lounge. Anna Renton-Green, 24 October 2024, HNZPT.

From the northern exterior entrance, recessed double doors lead into a light-filled vestibule decorated with two matching moulded plaster ceiling roses of geometrical Art Deco sunbursts, hung with vintage glass and chain light fittings. Ten original wooden-framed armchairs furnish this inviting and restful lounge. The south wall contains a large internal window to carry light through to the room beyond; this original steel joinery is glazed with obscured glass.

Doorways at either end of the partition wall lead south into the central toilet area, where, originally, seven cubicles contained five toilets and two ‘urinettes’ (female urinals).





**Figure 18** The cubicle room, looking east. Anna Renton-Green, 25 September 2025, HNZPT.



**Figure 19** The cubicle room, looking west. Anna Renton-Green, 25 September 2025, HNZPT.



**Figure 20** The window between vestibule and cubicle room. Anna Renton-Green, 25 September 2025, HNZPT.



**Figure 21** A typical toilet stall; note curved tiles between wall and floor. Anna Renton-Green, 25 September 2025, HNZPT.



**Figure 22** The accessible shower room in the former attendant’s office. Anna Renton-Green, 25 September 2025, HNZPT.

The western semi-circular wing is accessed from the main cubicle room, and originally housed two ‘toilet rooms’—larger spaces for changing clothes. These are now used for storage. The third space within this curved wing was the attendant’s room, now an accessible shower.

Access to the eastern semi-circular wing is gained from the entrance vestibule and contains the Mothers’ Room. Seating, two vintage wooden highchairs, and a stainless-steel bench with sink provide facilities to rest, change and feed children. A cubicle with a special child-sized toilet is at the south of this space.



**Figure 23** The Mothers’ Room. Anna Renton-Green, 25 October 2024, HNZPT.



**Figure 24** The child-sized toilet. Anna Renton-Green, 25 September 2025, HNZPT.

Underneath the building the remains of the 1917 toilet block form part of the foundations, inaccessible and hazardous due to the use of the ‘best asbestos slate in two colours’ as fire-resistant finishes.<sup>73</sup> The remains of cubicle walls are visible, still tiled with white-glazed subway tiles with a contrasting terracotta band. When the space was accessed in 2021 a number of loose items were found, generating an eerie personal presence in an otherwise abandoned space. A stovetop kettle, wooden umbrella stand, wooden magazine rack, and a pair of well-worn women’s shoes from the 1920s or 1930s—one with a broken heel evocatively suggesting the owner discarded the pair upon its failure—are now in the care of Te Manawa Museum.



**Figures 25-26** (Left) 1917 cubicle walls and tiling, Barbara Ravenhill, 2021. (Right) The heel-less women’s shoe, one of a pair found decades after they were abandoned, Kath Olliver, 2021. Images reproduced with the permission of Palmerston North City Council.

<sup>73</sup> Matthews & Matthews Architects Ltd, 2001, p.5

### 3.3 Chattels



#### Lounge Chairs

Ten armchairs, located in the lounge. Padded, upholstered seats and backrests in a timber frame. These chairs date from the building's original construction in 1936 and were chosen by the Mayoress Mrs A. E. Manson, and Mrs M. Aitchison.



#### Highchairs

Two wooden highchairs for feeding young infants, located in the Mothers' Room. A common twentieth-century design, the tray slides forward to allow the child to be placed in the seat and then slides back to hold the child in place.

## 4 APPENDICES

### 4.1 Appendix One: Construction and Use Information

#### Key Physical Dates

Construction Type	Date	Description
Original Construction	1916-1917	Construction of first Ladies' Rest Room – partially below ground level.
Partial Demolition	1936	Demolition of most of the 1917 Ladies' Rest Room; subfloor parts were reused as foundations in the 1936 building.
Original Construction	1936	Construction of Ladies' Rest; reuse of subsurface remnants of 1917 building as foundations and reuse of fittings and fixtures.
Physical access improvements	1949	Addition of external access ramp to eastern wing.
Partial Demolition	Unknown	Removal of eastern access ramp.

<b>Refurbishment/renovation</b>	1967	Replacement of porcelain handbasins.
<b>Modification</b>	1970s	Original windows replaced with aluminium joinery
<b>Partial Demolition</b>	2003-2004	Corridor to bus shelter at rear demolished.
<b>Addition</b>	2003-2004	Addition containing I-Site and other toilet facilities added to rear, joined by new internal access ramp.
<b>Refurbishment/renovation</b>	2003-2004	Replacement of bathroom fixtures except the children's toilets. Accessible shower room created in former Attendants office.

**Construction Materials**

Concrete, steel, plaster, tiles, aluminium windows, timber doors, glass

**Construction Professionals**

<b>Architect</b>	John R. Hughes, City Engineer Palmerston North Borough Council
------------------	---

**Site Usage**

General Use Type	Specific Use Type	Status
Civic Facilities	Public Lavatory	Current
Civic Facilities	Rest Rooms	Current

**Associated List Entries**

N/A

## 4.2 Appendix Two: Sources

### Sources available and accessed

Caroline Daley (2000), and Cooper et al (2000) published foundational work on our understanding of the development of public toilets for women in New Zealand. The Ian Matheson City Archives contain extensive original records of the provision of public toilets in Te Marae o Hine - The Square, including minute books, plans, specifications and contracts. These were directly accessed for this research, by Jessica Delman. In addition, the research accessed archival research notes prepared by former city archivist Ian Matheson for the 1991 heritage assessment report by Matthews & Matthews Architects. Newspaper clippings and letters in the city archives files were supplemented by items accessed through *Papers Past*, and provided a wealth of additional detail about construction and community esteem.

Heritage New Zealand Pouhere Taonga gratefully acknowledges the expertise of Rangitāne o Manawatū Kaumātua Warren Warbrick and Peter Te Rangi, who provided information on the history and presence of Rangitāne o Manawatū in Te Marae o Hine.

### Further reading

T. Lindsay Buick, *Old Manawatu*, Buick and Young Printers, Palmerston North, 1903

Annabel Cooper, Robin Law, Jane Malthus, and Pamela Wood, 'Rooms of Their Own: public toilets and gendered citizens in a New Zealand city, 1860-1940', *Gender, Place and Culture*, 2000, Vol 7 No. 4

Caroline Daley, 'Flushed with Pride? Women's Quest for Public Toilets in New Zealand', *Women's Studies Journal*, 2000, 16(1)

Matthews & Matthews Architects Ltd, 'Ladies Rest Room, The Square, Palmerston North: Cultural Heritage Assessment', unpublished client report for Palmerston North City Council, October 2001

G.C. Petersen, *Palmerston North: A Centennial History*, AH & AW Reed, Wellington/NSW/London/Auckland/Christchurch, 1973

Dorothy Pilkington, 'Spending a penny: public rest rooms for women in Palmerston North', *The Manawatū Journal of History*, 2009, Issue 5

# Short List Evaluation Framework

**Table 1. Short List assessment criteria**

Critical Success Factor	Criteria
Investment Objectives	Efficiency and reliability
	Safety
Deliverability	Constructability
Economic	Economic Development Potential
Opportunities and Impacts	Environmental
	Resilience
	Social
	Amenity and Severance
	Impacts on te ao Māori
Property Impacts	Property Impacts
Consenting Complexity	Consenting Complexity
Cost	Cost (non-scored)
Value for Money	Value for Money (non-scored)

**Relevant criteria and assessment relating to severance and impacts through townships**

Travel time and reliability of trips

Safety risk to people within town centres

Impacts including noise and vibration, visual impact, urban design, landscape, heritage, and air quality

Impacts on community in relation to jobs, recreation, services, local amenity and severance, impacts on farming and business operations

Number of Heavy Commercial Vehicles on people and place streets, reduced barriers for pedestrians and cyclists crossing the road or moving within an area